



**EVERLANDS II
COMMUNITY DEVELOPMENT
DISTRICT**

**PALM BAY
REGULAR BOARD MEETING
FEBRUARY 9, 2023
10:00 A.M.**

Special District Services, Inc.
The Oaks Center
2501A Burns Road
Palm Beach Gardens, FL 33410

www.everlands2cdd.org
561.630.4922 Telephone
877.SDS.4922 Toll Free
561.630.4923 Facsimile

AGENDA
EVERALNDS II COMMUNITY DEVELOPMENT DISTRICT
312 South Harbour City Boulevard
Melbourne, Florida 32949
REGULAR BOARD MEETING
February 9, 2024
10:00 A.M.

- A. Call to Order
- B. Proof of Publication.....Page 1
- C. Establish Quorum
- D. Additions or Deletions to Agenda
- E. Comments from the Public for Items Not on the Agenda
- F. Approval of Minutes
 - 1. December 8, 2023 Regular Board Meeting & Public Hearing Minutes.....Page 2
- G. Old Business
- H. New Business
 - 1. Consider Selection of District Engineer.....Page 7
 - 2. Discussion Regarding Required Ethics Training.....Page 62
- I. Administrative Matters
- J. Board Members Comments
- K. Adjourn



Florida
GANNETT

PO Box 631244 Cincinnati, OH 45263-1244

PROOF OF PUBLICATION

LAURA ARCHER
LAURA ARCHER
Everlands II CDD

2501 Burns RD # A
Palm Beach Gardens FL 33410-5207

STATE OF WISCONSIN, COUNTY OF BROWN

Before the undersigned authority personally appeared, who on oath says that he or she is the Legal Advertising Representative of the Florida Today, a daily newspaper published in Brevard County, Florida; that the attached copy of advertisement, being a Legal Ad in the matter of Public Notices, was published on the publicly accessible website of Brevard County, Florida, or in a newspaper by print in the issues of, on:

11/28/2023

Affiant further says that the website or newspaper complies with all legal requirements for publication in chapter 50, Florida Statutes.

Subscribed and sworn to before me, by the legal clerk, who is personally known to me, on 11/28/2023

Legal Clerk

Notary, State of WI, County of Brown

My commission expires

Publication Cost: \$285.05

Order No: 9551840

Customer No: 1070930

PO #:

Revised FY 2023/2024

of Copies:

1

THIS IS NOT AN INVOICE!

Please do not use this form for payment remittance.

EVERLANDS II COMMUNITY
DEVELOPMENT DISTRICT
REVISED FISCAL YEAR 2023/2024
REGULAR MEETING SCHEDULE
NOTICE IS HEREBY GIVEN that
the Board of Supervisors (the
"Board") of the Everlands II
Community Development District
(the "District") will hold Regular
Board Meetings (the "Meeting" or
"Meetings") at the offices of B.S.E.
Consultants, Inc. located at 312
South Harbor City Boulevard,
Melbourne, Florida 32901 at 10:00
a.m. on the following dates:

December 8, 2023

January 12, 2024

February 9, 2024

March 8, 2024

April 12, 2024

May 10, 2024

June 14, 2024

July 12, 2024

August 9, 2024

September 13, 2024

The purpose of the meetings is to
conduct any business coming before
the Board. Meetings are open to the
public and will be conducted in
accordance with the provisions of
Florida law. Copies of the Agendas
for any of the meetings may be
obtained from the District's website
www.everlands2cdd.org or
by contacting the District Manager at
772-345-5119 or by email at
bsakuma@sdsinc.org and/or toll
free at 1-877-737-4922 prior to the
date of the particular meeting. The
Meetings are open to the public and
will be conducted in accordance
with the provisions of Florida law
for special districts. The Meetings
may be continued to a date, time
and place to be specified on the
record at the Meeting.

From time to time one or two Super-
visors may participate by tele-
phone; therefore, a speaker tele-
phone may be present at the meet-
ing location so that Supervisors may
be fully informed of the discussions
taking place. Said meeting(s) may
be continued as found necessary to a
time and place specified on the
record.

If any person decides to appeal any
decision made with respect to any
matter considered at these meet-
ings, such person will need a record
of the proceedings and such person
may need to insure that a verbatim
record of the proceedings is made at
his or her own expense and which
record includes the testimony and
evidence on which the appeal is
based.

In accordance with the provisions of
the Americans with Disabilities Act,
any person requiring special accom-
modations or an interpreter to
participate at any of these meetings
should contact the District Manager
at 772-345-5119 and/or toll free at 1-
877-737-4922 at least seven (7) days
prior to the date of the particular
meeting.

Meetings may be cancelled from
time to time without advertised
notice.

EVERLANDS II COMMUNITY
DEVELOPMENT DISTRICT
www.everlands2cdd.org
PUBLISH: FLORIDA TODAY
11/28/23; #9551840

KATHLEEN ALLEN
Notary Public
State of Wisconsin

**EVERLANDS II COMMUNITY DEVELOPMENT DISTRICT
REGULAR BOARD MEETING & PUBLIC HEARINGS MINUTES
DECEMBER 8, 2023**

A. CALL TO ORDER

The Regular Board Meeting of the Everlands II Community Development District was called to order at 10:01 a.m. at 312 South Harbor City Boulevard, Melbourne, Florida 32949.

B. PROOF OF PUBLICATION

Proof of publication was presented which showed that notice of the Regular Board Meeting had been published in *Florida Today* on November 17, 2023, and November 24, 2023, as legally required.

C. ESTABLISH A QUORUM

A quorum was established with the following Supervisors in attendance:

Gregory J. Pettibon, Chris Cutler and Bojana Brown.

Also in attendance were Frank Sakuma of Special District Services, Inc.; Attorney Ginger Wald of Billing, Cochran, Lyles, Mauro & Ramsey, P.A. (by phone); Ken Ludwa of B.S.E. Consultants, Inc.; and Haley Mall of Lennar Homes (by phone).

D. COMMENTS FROM THE PUBLIC FOR ITEMS NOT ON THE AGENDA

There were no comments from the public.

E. APPROVAL OF MINUTES

1. October 13, 2023, Regular Board Meeting

The October 13, 2023, Regular Board Meeting minutes were presented for Board approval. A **motion** was made by Mr. Pettibon, seconded by Mr. Cutler and passed unanimously approving the October 13, 2023, Regular Board Meeting Minutes, as presented.

Note: *At approximately 10:02 a.m., Mr. Sakuma recessed the Regular Meeting and opened the Public Hearing on the Fiscal Year 2023/2024 Final Budget.*

F. PUBLIC HEARING – BUDGET

1. Proof of Publication

Proof of publication was presented that notice of Public Hearing had been published in *Florida Today* on November 17, 2023, and November 24, 2023, as legally required.

2. Receive Public Comment on Adopting Fiscal Year 2023/2024 Final Budget

Mr. Sakuma opened the public comment portion of the Public Hearing to receive comments regarding the adoption of the fiscal year 2023/2024 final budget. There being no comments, Mr. Sakuma closed the public comment portion of the Public Hearing.

3. Consider Resolution No. 2023-17 – Adopting Fiscal Year 2023/2024 Final Budget

Mr. Sakuma presented Resolution 2023-17, entitled:

RESOLUTION 2023-17

THE ANNUAL APPROPRIATION RESOLUTION OF THE EVERLANDS II COMMUNITY DEVELOPMENT DISTRICT RELATING TO THE ANNUAL APPROPRIATIONS AND ADOPTING THE BUDGET FOR THE FISCAL YEAR BEGINNING OCTOBER 1, 2023 AND ENDING SEPTEMBER 30, 2024; AUTHORIZING BUDGET AMENDMENTS; AND PROVIDING AN EFFECTIVE DATE.

Mr. Sakuma read the title of the resolution into the record and asked for Board consideration of the resolution.

A **motion** was made by Mr. Pettibon, seconded by Mr. Cutler and unanimously passed adopting Resolution No. 2023-17, as presented.

Note: *At approximately 10:03 a.m., Mr. Sakuma closed the Public Hearing on the Fiscal Year 2023/2024 Final Budget and opened the Public Hearing on the Intent to Utilize the Uniform Method of Levying, Collecting and Enforcing Non-Ad Valorem Assessments.*

G. PUBLIC HEARING – UNIFORM METHOD

1. Proof of Publication

Proof of publication was presented that notice of the Public Hearing had been published in *Florida Today* on November 10, 2023, November 17, 2023, November 24, 2023, and December 1, 2023, as legally required.

2. Receive Public Comment on the Intent to Utilize the Uniform Method of Levying, Collecting and Enforcing Non-Ad Valorem Assessments

Mr. Sakuma opened the public comment portion of the Public Hearing to receive comments regarding the Intent to Utilize the Uniform Method of Levying, Collecting and Enforcing Non-Ad Valorem Assessments. There being no comments, Mr. Sakuma closed the public comment portion of the Public Hearing.

3. Consider Resolution No. 2023-18 – Intent to Utilize the Uniform Method of Levying, Collecting and Enforcing Non-Ad Valorem Assessments

Mr. Sakuma presented Resolution 2023-18, entitled:

RESOLUTION 2023-18

**RESOLUTION OF THE BOARD OF SUPERVISORS OF THE
EVERLANDS II COMMUNITY DEVELOPMENT DISTRICT
EXPRESSING ITS INTENT TO UTILIZE THE UNIFORM
METHOD OF LEVYING, COLLECTING, AND ENFORCING
NON AD VALOREM ASSESSMENTS WHICH MAY BE LEVIED
BY THE EVERLANDS II COMMUNITY DEVELOPMENT
DISTRICT IN ACCORDANCE WITH SECTION 197.3632,
FLORIDA STATUTES; PROVIDING A SEVERABILITY
CLAUSE; AND PROVIDING AN EFFECTIVE DATE.**

Mr. Sakuma read the title of the resolution into the record and asked for Board consideration of the resolution.

A **motion** was made by Mr. Pettibon, seconded by Mr. Cutler and unanimously passed adopting Resolution No. 2023-18, as presented.

Note: *At approximately 10:04 a.m., Mr. Sakuma closed the Public Hearing regarding the Intent to Utilize the Uniform Method of Levying, Collecting and Enforcing Non-Ad Valorem Assessments and simultaneously opened the Public Hearing to consider the Levy of Non-Ad Valorem Assessments.*

H. PUBLIC HEARING – LEVY OF NON-AD VALOREM ASSESSMENTS

1. Proof of Publication

Proof of publication was presented that notice of Public Hearing had been published in *Florida Today* on November 15, 2023, and November 22, 2023, as legally required.

2. Receive Public Comment on Adopting Rules of Procedure

Mr. Sakuma opened the public comment portion of the Public Hearing to receive comments regarding the Intent to Levy Special Assessments. There being no comments, Mr. Sakuma closed the public comment portion of the Public Hearing.

3. Consider Approval of the Project and Levying of Non-Ad Valorem Special Assessments

A **motion** was made by Mr. Pettibon, seconded by Mr. Cutler and unanimously passed approving the Project and Levying of Non-Ad Valorem Special Assessments.

4. Consider Adjusting and Equalizing of Non-Ad Valorem Special Assessments

A **motion** was made by Mr. Pettibon, seconded by Mr. Cutler and unanimously passed Adjusting and Equalizing of Non-Ad Valorem Special Assessments.

5. Consider Resolution 2023-19 Authorizing Levy of Non-Ad Valorem Special Assessments

Mr. Sakuma presented Resolution 2023-19, entitled:

RESOLUTION 2023-19

A RESOLUTION OF THE BOARD OF SUPERVISORS OF THE EVERLANDS II COMMUNITY DEVELOPMENT DISTRICT AUTHORIZING DISTRICT SYSTEMS, FACILITIES, SERVICES AND RELATED INFRASTRUCTURE IMPROVEMENTS; EQUALIZING, APPROVING, CONFIRMING, IMPOSING AND LEVYING CERTAIN NON-AD VALOREM SPECIAL ASSESSMENTS ON CERTAIN LANDS WITHIN THE DISTRICT SPECIALLY BENEFITTED BY SUCH IMPROVEMENTS, TO PAY A PORTION OF THE COST THEREOF; PROVIDING FOR THE PAYMENT AND THE COLLECTION OF SUCH SPECIAL ASSESSMENTS BY THE METHOD PROVIDED FOR BY CHAPTERS 170 AND 197, FLORIDA STATUTES; CONFIRMING THE DISTRICT'S INTENTION TO ISSUE SPECIAL ASSESSMENT BONDS; PROVIDING FOR SEVERABILITY, CONFLICTS AND AN EFFECTIVE DATE.

Mr. Sakuma read the title of the resolution into the record and asked for Board consideration of the resolution.

A **motion** was made by Mr. Pettibon, seconded by Mr. Cutler and unanimously passed adopting Resolution No. 2023-19, as presented.

Note: *At approximately 10:06 a.m., Mr. Sakuma closed the Public Hearing considering the Levy of Non-Ad Valorem Assessments and simultaneously reconvened the Regular Board Meeting.*

I. OLD BUSINESS

There were no Old Business items for consideration.

J. NEW BUSINESS

There were no New Business items for consideration.

K. ADMINISTRATIVE MATTERS

There were no Administrative Matters items for consideration.

L. BOARD MEMBER COMMENTS

There were no further comments from the Board.

M. ADJOURNMENT

There being no further business to come before the Board, Mr. Pettibon adjourned the meeting and there were no objections.

ATTESTED BY:

Secretary/Assistant Secretary

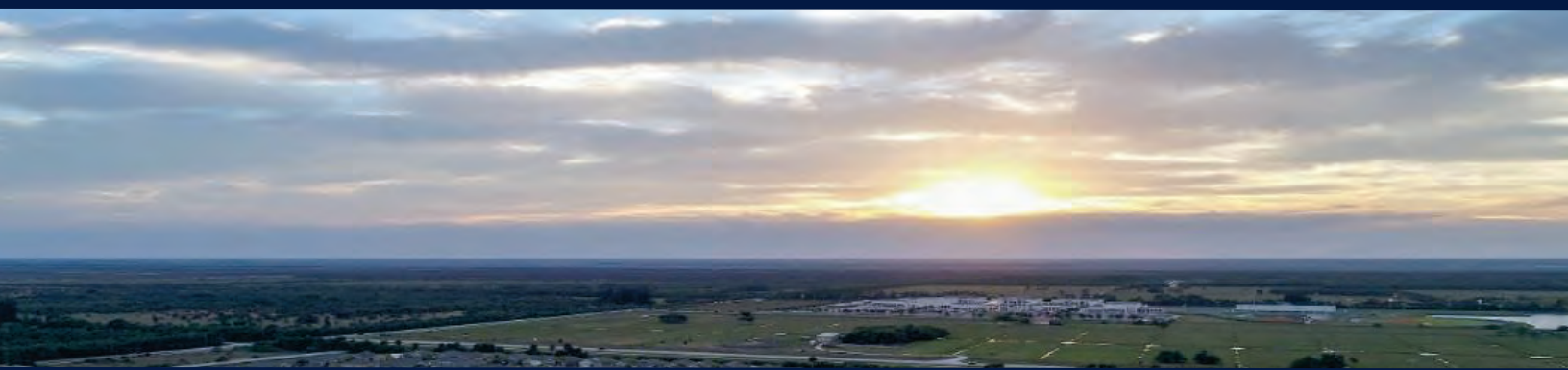
Chairperson/Vice-Chair

**Everlands II Community Development District
Ranking of Proposals
District Engineer**

Selection Criteria	Point Range	BSE	#2	#3
Ability and Adequacy of Professional Personnel	1-25	25		
Consultant's Past Performance	1-25	25		
Geographic Location	1-20	20		
Willingness to Meet Time and Budget Requirements	1-15	15		
Certified Minority Business Enterprise	1-5	1		
Recent, Current and Projected Workloads	1-5	5		
Volume of Work Previously Awarded to Consultant by District	1-5	5		
Total Points	100	96	0	0

RESPONSE TO REQUEST FOR QUALIFICATIONS

Everlands II Community Development District Engineering Services



Submitted By

B.S.E. Consultants, Inc.
312 South Harbor City Blvd., Suite 4
Melbourne, Florida 32901
(321) 725- 3674
info@bseconsult.com

Submitted To

Everlands II Community Development District
c/o Special District Services, Inc.
10807 SW Tradition Square
Port St. Lucie, FL 34987
bsakuma@sdsinc.org

TABLE OF CONTENTS

**Response to Request for District Engineer Qualifications
for
Everlands II CDD**

Transmittal LetterTab 1

Firm QualificationsTab 2

Personnel.....Tab 3

Standard 330 FormsTab 4

Client ReferencesTab 5

InsuranceTab 6

Business EthicsTab 7

Business and Professional LicensesTab 8





TAB 1 - TRANSMITTAL LETTER



B.S.E. CONSULTANTS, INC.
Consulting ~ Engineering ~ Land Surveying

Scott M. Glaubitz, P.E., P.L.S.
President

Hassan Kamal, P.E.
Vice President

November 30, 2023

Mr. Frank Sakuma, District Manager
Everlands II Community Development District
c/o Special District Services, Inc.
10807 SW Tradition Square
Port St. Lucie, Florida 34987
Email: bsakuma@sdsinc.org

Re: Response to Request for District Engineer Qualifications for Everlands II CDD
B.S.E. File# 23-RFQ-095


Dear Mr. Sakuma:

Thank you for this opportunity to present our qualifications in response to the District's Request for Proposal for Engineering Services. In response, we are enclosing five (5) hard copies and one in PDF format for your review.

B.S.E. Consultants, Inc. is uniquely qualified to serve as the Engineer for the District. Our firm is veteran owned and has been providing professional engineering services in the state of Florida for over 37 years, primarily in Brevard County. BSE has served as District Engineer for seven other CDDs within Brevard County. Notably, we have been District Engineer for Everlands CDD since 2021, preparing Engineering Reports and cost opinions for establishment of the District, and District Engineer for Heritage Isle at Viera CDD since its establishment in 2003, providing design, permitting, construction administration, and inspection of the District's infrastructure. BSE is also the engineer and surveyor on record for the Everlands community, including onsite and offsite utilities, stormwater management, roadways and pedestrian facilities, and open space amenities. BSE was the project engineer for Preserve at Tradition in Port St. Lucie, Florida, integrating the project with the Tradition CDD's master drainage system and ensuring that the project was consistent with CDD design requirements. We serve as Town Engineer for the Towns of Grant-Valkaria, Melbourne Beach, and Indialantic, and we have provided consulting engineering services to the City of Palm Bay. These projects are only a small representation of our local and relevant experience, which allows us to be nimble and responsive to the needs of the Everlands II CDD with an expert understanding of the civil, hydrologic and land development requirements of this area.

Should BSE have the privilege of being selected, I will be the primary contact leading our team of exceptionally qualified professionals to service the Community Development District's needs.

Very truly yours,


Scott M. Glaubitz, P.E., P.L.S.
President
B.S.E. Consultants, Inc.

Civil ~ Agricultural ~ Transportation ~ Utility ~ Site Planning ~ Environmental
312 South Harbor City Boulevard, Suite #4, Melbourne, Florida 32901
Telephone: (321) 725-3674 ~ Fax: (321) 723-1159 ~ Toll Free: 1-800-523-4BSE(4273) ~ Email: info@bseconsult.com



TAB #2 - FIRM QUALIFICATIONS

TAB 2 – FIRM QUALIFICATIONS

Company Background

BSE is a full-service firm that has provided a variety of **Civil Engineering and Surveying Services** for public and private clients in Brevard County for over 37 years. The company is incorporated in Melbourne, Florida and its principals are Scott Glaubitz, P.E., P.L.S., President, and Hassan Kamal, P.E., Vice-President.

BSE's extensive experience with other Community Development Districts and residential development, technical expertise, long-term local presence, and engineering and permitting experience with the Everlands community makes us uniquely qualified to serve as the District Engineer for the Everlands II CDD.

Our core team available to the CDD includes six professional engineers and two professional surveyors with a combined experience of more than 150 years

Engineering Services Provided

- *Water Master Planning*
- *Sewer Master Planning*
- *Effluent Reuse Master Planning*
- *Water Treatment & Transmission Systems*
- *Wastewater Treatment & Collection Systems*
- *Infiltration / Inflow Analysis*
- *Transportation Systems*
- *Stormwater Management Systems*
- *Grading and Drainage Planning*
- *Irrigation Design*
- *Lighting Design*
- *Cost Analysis and Evaluation*
- *Permitting and Approvals*
- *Flood Elevation Certification*
- *Marina and Dock Facilities*
- *Resident Engineering/Towns & Municipalities*
- *Specification Writing*
- *Agricultural Engineering*
- *Stormwater Retrofitting*
- *Street/Roadway Retrofitting*
- *Grant and Loan Applications*
- *Value Engineering Analysis*



TAB 2 – FIRM QUALIFICATIONS

The sections below describe BSE Consultants' specific qualifications and experience corresponding to the Request for Qualifications.

a) Ability of Professional Personnel

With more than 44 years of civil and hydrologic engineering and surveying experience, Scott Glaubitz will serve as the District Engineer for the Everlands II CDD. Our team available to the CDD includes six (6) professional engineers and two (2) professional land surveyors with a ***combined experience of more than 150 years***, the vast majority within Brevard County.

We pride ourselves on our ability to provide a comprehensive variety of services. Our professional staff can develop a project from beginning to end, providing boundary and topographic surveys, complete design engineering and permitting, preparation of contract specifications, construction administration and the preparation of complete as-built drawings.

In addition, BSE has a thorough understanding of local laws and regulations and we maintain excellent working relationships with the City of Palm Bay, Brevard County, Melbourne-Tillman Water Control District, and other regulatory agencies with which the District Engineer must work. Our local experience and agency relationships will greatly benefit the Everlands II CDD as it continues to expand the District infrastructure and operate and maintain the existing facilities.

This comprehensive project approach allows for better project control, resulting in a more efficient and cost-effective project for the District. Our ability to provide the majority of the services in-house will greatly reduce the need to hire sub-consultants, thereby reducing contract administration requirements and overall costs to the District.



b) Minority Business Enterprise

BSE is not a Minority Business Enterprise.

c) Willingness to Meet Time and Budget Requirements

BSE's approach to time and budget management starts with developing a clear scope, schedule, and budget for each task, in cooperation with the CDD Manager. We track monthly performance against the schedule and budget and communicate regularly with the client. Without the bureaucracy of larger firms, BSE's principals are always involved and attentive to project progress.



TAB 2 – FIRM QUALIFICATIONS



If external factors arise that may affect scope or budget, we have found the most effective preventative measure is to advise the client promptly. Changes that may need to occur will be discussed in detail with the CDD Manager to ensure the impacts of the proposed changes are defined and understood by all parties. the District infrastructure and operate and maintain the existing facilities.

d) Past Experience and Performance

We believe our extensive experience with other **Community Development Districts** and residential development, technical expertise, long-term local presence, and engineering and permitting experience with the Everlands and Palm Vista communities makes BSE uniquely qualified to serve as the District Engineer for the Everlands II CDD.

A summary of our CDD experience is presented below. More detailed information regarding our experience and qualifications is presented within the Form SF-330 included in this proposal.

Everlands Community Development District – BSE has served as District Engineer from the inception of the Everlands CDD in 2020. The CDD is located in the City of Palm Bay, Brevard County, Florida, and includes Phase 1 (162 units completed in 2021) and Phase 2 (840 units currently under construction). BSE prepared the Phase 1 and Phase 2 Engineering Reports, which documented District facilities and costs, including stormwater management facilities, right-of-way improvements, and water, sewer, and force main improvements. As District Engineer, BSE provides ongoing design, permitting, inspection, and consultation for maintenance and operation of District facilities.



Heritage Isle at Viera Community Development District – BSE has served as District Engineer from the inception of the Heritage Isle at Viera CDD since 2003. Heritage Isle is a ±2,800-unit residential development located within the Viera Development of Regional Impact (DRI), in Brevard County, Florida. BSE prepares all required Engineering Reports, cost estimates, design and permitting of the District's infrastructure improvement facilities, infrastructure inspection, construction administration and assistance in establishment of maintenance operations and contracts for the District's infrastructure facilities.



TAB 2 – FIRM QUALIFICATIONS

BSE has provided civil engineering and surveying services in Brevard County for over 37 years.

Palm Vista Preserve East Community Development District – Served as District Engineer for the duration of its existence (±5 years). Assisted in the formation of the District, prepared Engineer's Report(s), cost estimates, and Engineering Studies as needed. Completed detailed design and permitting of various infrastructure projects, including roadways, stormwater management facilities, utilities, and recreation improvements.

Chaparral Community Development District – Served as District Engineer for approximately 5 years. Assisted in the formation of the District, prepared Engineer's Reports, cost estimates, and Engineering Studies as needed. Completed detailed design and permitting of various infrastructure projects, including roadways, stormwater management facilities, utilities, and recreation improvements.

Malabar Springs Community Development District – Serving as interim District Engineer. Assisted in the formation of the District, prepared Engineer's Reports, cost estimates, and Engineering Studies as needed. Completed detailed design and permitting of infrastructure projects, including roadways, stormwater management facilities, utilities, and recreation improvements.

Baytree Community Development District – Served as District Engineer for 11 years. During this period, we worked with District Staff, the Board of Supervisors and the Residents to design, build, and maintain the infrastructure, recreational facilities, and security facilities serving the various phases of development.



Viera East Community Development District – Served as District Engineer for 2 years. Provided engineering services for various infrastructure projects and assisted in the transition from a Developer controlled Board to a Resident controlled Board.

The Preserve at Tradition – Served as Engineer of Record for design, permitting, and construction of the Preserve at Tradition, a residential subdivision with 110 units in Port St. Lucie, Florida, completed in 2019. BSE designed the stormwater management system, water, sewer, and reuse systems, roadways, and pedestrian facilities. BSE coordinated project design and construction with the Tradition CDD, integrating the project with the CDD's master drainage system and ensuring that the project was consistent with CDD design requirements.



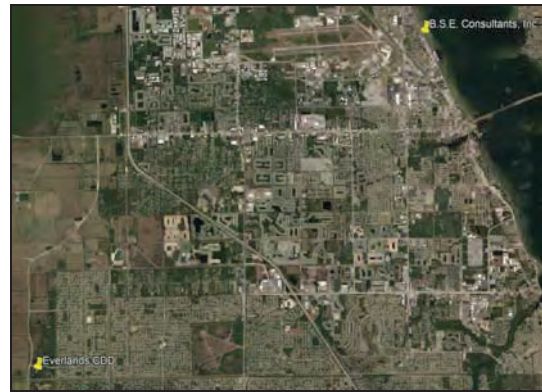
TAB 2 – FIRM QUALIFICATIONS

In addition to the CDD projects above, ***BSE is the current Engineer and Surveyor of Record for the Everlands communities***, having designed and permitted the first phase (construction starting in 2020), including onsite and offsite utilities, stormwater management, roadways and pedestrian facilities, and open space amenities. BSE is also planning and vetting the Everlands master plan and designing future phases. We have a comprehensive and detailed familiarity with the Everlands community's infrastructure and its relationship with surrounding areas, allowing us to respond to the community's engineering needs quickly, without having to assess what is in the ground and the original basis for design.



e) Location

At just 12 miles from the Everlands Community, we are truly local, and our proximity minimizes travel time expenses and will allow us to cost-effectively serve the District.



f) Current and Projected Workloads

BSE's current client portfolio includes: The Viera Company, DR Horton, Lennar Homes, WCI, and the Towns of Grant-Valkaria, Melbourne Beach, and Indialantic along with numerous others. We are adequately staffed to meet project schedules and budgets for all of our clients. We are able to successfully complete additional projects due to our exceptional attention to detail, comprehensive project management systems, internal communications, and by allocating staff resources as needed to meet and exceed client expectations. We will follow this same approach to provide timely, quality client service to Everlands II CDD.

Without the bureaucracy of larger firms, BSE's principals are always involved and attentive to project progress and client satisfaction.



TAB 2 – FIRM QUALIFICATIONS

g) Work Previously Awarded to the Applicant by the District

BSE is the interim engineer for the District, providing services for establishment of the District. BSE prepared the Engineering Report which documented District facilities and costs, including stormwater management facilities, right-of-way improvements, and water, sewer, and force main improvements.





TAB 3 - PERSONNEL

TAB 3 – PERSONNEL

Our core team, presented below, will provide the majority of services required for the Everlands CDD. Additional Professional Staff, including ten CAD technicians, three survey crews, and three administrative personnel are available on a project-by-project basis as may be required. Resumes are provided for the individuals listed below.

Scott M. Glaubitz, P.E., P.L.S.

Mr. Glaubitz will serve as the Project Manager and CDD Engineer and will be the primary contact with the Everlands CDD Staff, Board, and residents. Mr. Glaubitz will attend all required District meetings and will be responsible for the management, design, permitting, and construction administration of all District projects.

Hassan Kamal, P.E.

Mr. Kamal has experience as the CDD Engineer for several Districts. His experience will be drawn upon as needed. In addition, Mr. Kamal will be available to provide input and guidance on a variety of design and construction issues as they arise.

Ana Saunders, P.E.

Ms. Saunders will provide engineering services on an as-needed basis. Ms. Saunders has more than 20 years of experience as District engineer for other CDDs, providing engineering reports and cost estimates for CDD creation, design and permitting services for multiple phases of development.

Kenneth Ludwa, P.E.

Mr. Ludwa specializes in stormwater management and hydrologic engineering and permitting. Mr. Ludwa was the project engineer for the first phase of the Everlands community. He will assist in the design, permitting and construction management for the District Facilities. Mr. Ludwa will be available to attend CDD meetings or respond to questions should Mr. Glaubitz be unavailable.

Leslie Howard, P.L.S.

Mr. Howard will serve as the Project Surveyor and will be responsible for any design surveys, right-of-way surveys, and as-built drawing which may be required as part of any District projects. In addition, Mr. Howard will be responsible for establishing and maintaining any vertical and horizontal control required as part of a District project. Mr. Howard will also be responsible for the preparation of any legal descriptions, sketches, or boundary surveys which may be needed by the District.



Scott M. Glaubitz P.E., P.L.S., President

sglaubitz@bseconsult.com

Mr. Glaubitz has more than 44 years of experience in both the private and public sectors. His background of civil engineering and surveying includes DOT service, 30+ Development of Regional Impact (DRI) projects, community planning, ordinance writing, drainage studies, commercial/industrial developments as well as agricultural developments. Mr. Glaubitz' experience also includes the design and permitting of roadway and utility infrastructure, including remodeling of the City of Cocoa's water system and master planning and implementation of Viera's utility infrastructure.

Mr. Glaubitz has managed drainage and water management studies for Hendry County (± 108 sq mi), Port LaBelle (± 22 sq mi), Duda Ranch in Brevard County (± 60 sq mi), Platt Ranch in Brevard County (± 6.2 sq mi), the Town of Grant-Valkaria (32 sq mi), and the Town of Indialantic (± 1.3 sq mi). Mr. Glaubitz manages BMAP compliance programs for the towns of Indialantic and Grant-Valkaria.

As the President of BSE, Mr. Glaubitz is responsible for project management, scheduling, resource management, quality assurance and leads the design process from conceptual planning to construction.

PROFESSIONAL QUALIFICATIONS

◆ Registered Engineer, Minnesota	2008
◆ Registered Engineer, North Carolina	1996
◆ Registered Land Surveyor, Florida	1985
◆ Registered Engineer, Florida	1983
◆ Member, National Society of Professional Engineers (NSPE)	1985
◆ Member, American Society of Civil Engineers (ASCE)	1983
◆ Member, Florida Engineering Society (FES)	1983
◆ University of Minnesota (BS, Civil Engineering)	1979

SELECTED PROJECTS

-
- ◆ Baytree CDD — Master development design and CDD engineer
 - ◆ Chaparral — Master development, water management and utility design and permitting
 - ◆ Palm Vista — Master development, water management and utility design and permitting
 - ◆ The Preserve at Tradition — Site design and stormwater management
 - ◆ Rolling Meadow Lakes — Master development, water management and utility design and permitting
 - ◆ Town of Indialantic — Master stormwater plan and improvements, Town engineer, and BMAP compliance
 - ◆ Town of Grant-Valkaria — Town drainage study, Town engineer, and BMAP Compliance





Hassan Kamal P.E., Vice-President

hkamal@bseconsult.com

Hassan Kamal has over 39 years of experience in both the private and public sectors. His civil engineering experience includes the planning, design, permitting and construction administration of numerous roadway projects, large scale residential and commercial/office developments and major utility improvements. He has been responsible for the successful completion of numerous large scale drainage studies and floodplain analysis and has also assisted in several Development of Regional Impact (DRI) projects. In addition, Mr. Kamal has been involved with several Community Development Districts (CDD) providing design and permitting services as well as operating as the District's engineer.

As the Vice President of BSE, Mr. Kamal is responsible for overseeing multiple projects, coordination with clients and governmental agencies and sub-consultants, project management, scheduling, resource management and quality assurance.

PROFESSIONAL QUALIFICATIONS

- | | |
|--|------|
| ◆ Member, American Society of Civil Engineers (ASCE) | 1989 |
| ◆ Member, Florida Engineering Society (FES) | 1989 |
| ◆ Registered Engineer, Florida | 1989 |
| ◆ University of Tennessee (BS, Civil Engineering) | 1983 |

SELECTED PROJECTS

-
- ◆ Baytree CDD - Master development design and CDD engineer
 - ◆ Heritage Isle CDD - Master development design and CDD engineer
 - ◆ Viera East CDD - Development design and CDD engineer
 - ◆ Viera Village One - Master planning, engineering and utility design and permitting
 - ◆ Viera Village Two-Three - Master planning, engineering and utility design and permitting
 - ◆ Judge Fran Jamieson Way - Roadway design and permitting
 - ◆ Lake Andrew Drive Four-Lane Widening - Roadway design and permitting
 - ◆ Stadium Parkway (southern section) - Roadway/utility design and permitting
 - ◆ Lake Andrew Drive (north segment) - Roadway/utility design and permitting
 - ◆ Wickham Road Widening — roadway design and permitting



Ana Saunders P.E., Senior Project Engineer

asaunders@bseconsult.com

Ana Saunders has more than 22 years of experience in civil engineering design. Her background includes the design and permitting of infrastructure systems, including single-family, multi-family, commercial, industrial and mixed use developments, large utility and stormwater management systems and drainage basin studies for both the public and private sectors. In her current position, Ana is responsible for the project management of residential, commercial and industrial development related projects including design, permitting and construction administration.

In addition to the responsibilities noted above, Ms. Saunders has been involved with multiple Community Development Districts (CDD) providing master Engineering Reports and cost estimates for CDD creation, design and permitting services for multiple phases of development, and operating as the District's engineer.

PROFESSIONAL QUALIFICATIONS

- | | |
|---|------|
| ◆ Member, Florida Engineering Society (FES) | 2007 |
| ◆ Member, National Society of Professional Engineers (NSPE) | 2007 |
| ◆ Registered Engineer, Florida | 2006 |
| ◆ Member, American Society of Civil Engineers (ASCE) | 2001 |
| ◆ University of Florida (BS, Civil Engineering) | 2000 |

SELECTED PROJECTS

- ◆ Palm Vista Preserve East, CDD - Master design and engineering reports and district engineer
- ◆ Heritage Isle, CDD - Design and permitting of multiple phases, serve as district engineer
- ◆ Viera DRI Village 1 - Master utility plan, modeling, design and permitting
- ◆ Chaparral - Design and permitting of master improvements and multiple phases
- ◆ Timbers at Everlands - Stormwater management design, modeling and permitting
- ◆ Riverwood at Everlands - Stormwater management design, modeling and permitting
- ◆ St Johns Heritage Parkway - Stormwater modeling and permitting
- ◆ Emerson Road - Stormwater modeling and permitting
- ◆ Pace Road - Stormwater modeling and permitting
- ◆ Malabar Road - Stormwater modeling and permitting

BSE Consultants, Inc. • 312 South Harbor City Blvd., Suite 4 • Melbourne, Florida 32901 • (321) 725-3674





Kenneth Ludwa P.E., Senior Project Engineer

kludwa@bseconsult.com

Ken Ludwa has more than 29 years of consulting engineering practice in the private and public sectors, specializing in stormwater management, utility infrastructure, and permitting and regulatory compliance. Ken is BSE's primary point of contact for Engineering Services with the Everlands CDD.

Mr. Ludwa joined BSE in July 2014 as a Civil Engineer and Project Manager. Before joining BSE, he was a Research and Development Program Manager at Development Alternatives Incorporated (DAI) in Bethesda, Maryland. While employed with DAI, Mr. Ludwa designed and launched a water resources research grants program for the Middle East and North Africa Network of Water Centers, funded by the U.S. Agency for International Development. The grants will strengthen regional water resources technology, management and policy. In prior experience as a water resources engineer, Mr. Ludwa developed complex, predictive models to guide the implementation of pollution control and flood control projects, prepared comprehensive stormwater management plans and capital improvement plans, and prepared design drawings, specifications, and cost estimates for surface water conveyance, flood management, and pollution control facilities for residential development, urban redevelopment projects, airports, highways and roads, industrial sites, parks, cemeteries, and forestry activities. As a Senior Project Engineer with BSE, Ken is responsible for the project management of residential and commercial development related projects including design, permitting and construction administration.

PROFESSIONAL QUALIFICATIONS

◆ Registered Engineer, Florida	2014
◆ Registered Engineer, North Carolina	2013
◆ Registered Engineer, Washington State	1999
◆ University of Washington (Master of Science, Civil Engineering)	1994
◆ University of Illinois (BS, Civil Engineering)	1992

SELECTED PROJECTS

- ◆ Everlands CDD - Engineering Services, including Engineering Reports and Engineering Cost Opinions for CDD Infrastructure
- ◆ Edgewood at Everlands - Subdivision design and permitting, including stormwater management and utilities
- ◆ The Preserve at Tradition - Subdivision design and permitting; stormwater management and utilities design; CDD coordination
- ◆ Viera DRI, Village 1 and Village 2 Master Stormwater Plans - Water management modeling, design, and permitting
- ◆ Southampton Lakes - Subdivision design and permitting, including utilities and stormwater management

BSE Consultants, Inc. • 312 South Harbor City Blvd., Suite 4 • Melbourne, Florida 32901 • (321) 725-3674





Leslie E. Howard, P.S.M., Survey Director

lhoward@bseconsult.com

Mr. Howard has worked on design/development, processing and project management teams for many government, public improvements, residential, commercial and industrial projects in South West Florida and Kentucky. Experience includes ALTA/ACSM Land Title surveys, boundary, improvement and topographic surveys, aerial photo control and surface volumetric surveys, hydrographic and subsurface volumetric surveys, GPS control using static, fast static and real time Kinematic methodologies, subdivision platting, boundary line adjustments with full project management and coordination.

As head of our survey department, for over 17 years Mr. Howard has been responsible for in route surveys for large scale infrastructure projects, Right-of-Way research, mapping and field monumentation roadway projects, coordination of multiple facets of data acquisition associated with developing design/survey data and property ownership, current GPS data acquisition technology, management and supervision of multiple crews and projects, and a broad understanding of Florida Statutes survey requirements.

PROFESSIONAL QUALIFICATIONS

- ◆ Registered Land Surveyor, Florida (1985)
- ◆ Florida Survey and Mapping Society
- ◆ Certified Project Manager, South Florida Water Management District
- ◆ Florida PSM

SELECTED PROJECTS

- ◆ Lake Andrew Drive - Survey, right-of-way mapping, survey control, construction layout and as-built survey drawings for ± 2.5 miles of four-lane urban arterial roadway construction
- ◆ Judge Fran Jamieson Way - Survey, right-of-way mapping, survey control, construction layout and as-built survey drawings for ± 1.25 miles of four-lane urban collector roadway
- ◆ Wickham Road Extension and Widening - Survey, right-of-way mapping, survey control, construction layout and as-built survey drawings for construction and widening of ± 2.6 miles of arterial roadway, including relocation of overhead utilities, transmission lines (water, wastewater), and pedestrian improvements
- ◆ Stadium Parkway - Design survey, right-of-way mapping, survey control, construction layout and as-built survey drawings for construction and widening of ± 4.5 miles of urban arterial roadway
- ◆ Viera Boulevard - Design survey, right-of-way mapping, survey control, construction layout and as-built survey drawings for the new construction of ± 1.9 miles of major collector roadway
- ◆ Tavistock Drive - Design survey, right-of-way mapping, survey control, construction layout and as-built survey drawings for the new construction of ± 2.7 miles of a two-lane local collector roadway, including utilities, pedestrian facilities and major drainage conveyances



TAB 4 - STANDARD 330

ARCHITECT - ENGINEER QUALIFICATIONS

PART 1 - CONTRACT-SPECIFIC QUALIFICATIONS

A. CONTRACT INFORMATION

1. TITLE AND LOCATION (City and State)

Response to Request For Qualifications for Engineering Services for The Everlands II Community Development District

2. PUBLIC NOTICE DATE

November 20, 2023

3. SOLICITATION OR PROJECT NUMBER

N/A

B. ARCHITECT-ENGINEER POINT OF CONTACT

4. NAME AND TITLE

Scott M. Glaubitz, P.E., P.L.S. / President

5. NAME OF FIRM

B.S.E. Consultants, Inc.

6. TELEPHONE NUMBER

(321) 725-3674

7. FAX NUMBER

(321) 723-1159

8. E-MAIL ADDRESS

sglaubitz@bseconsult.com, info@bseconsult.com

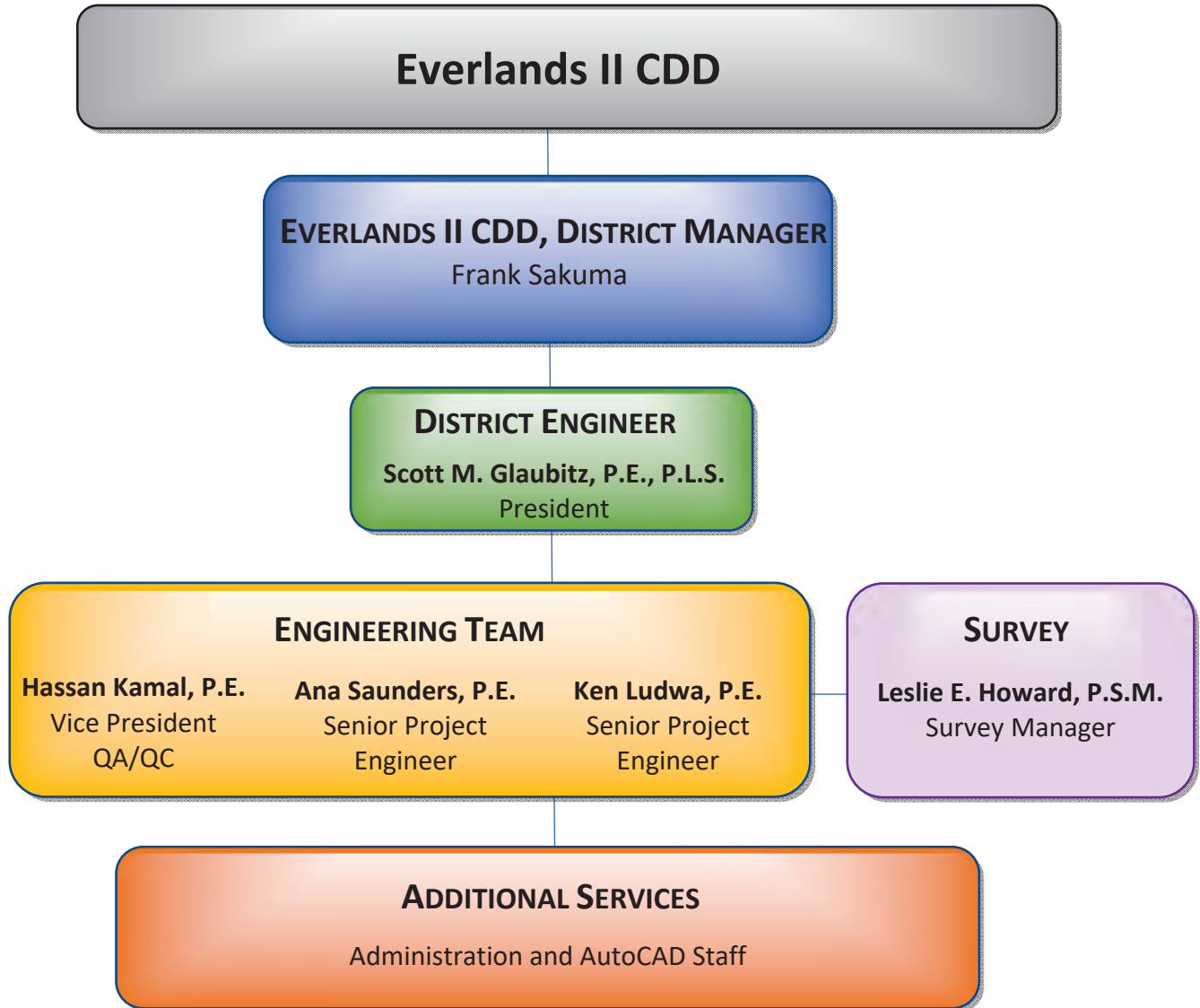
C. PROPOSED TEAM

(Complete this section for the prime contractor and all key subcontractors.)

	(Check)			9. FIRM NAME	10. ADDRESS	11. ROLE IN THIS CONTRACT
	PRIME	J-V PARTNER	SUBCONTRACTOR			
a.	<input checked="" type="checkbox"/>	<input type="checkbox"/>	<input type="checkbox"/>	B.S.E. Consultants, Inc. CHECK IF BRANCH OFFICE	312 S. Harbor City Blvd., Suite 4 Melbourne, FL 32901	District Engineer
b.	<input type="checkbox"/>	<input type="checkbox"/>	<input type="checkbox"/>	 CHECK IF BRANCH OFFICE		
c.	<input type="checkbox"/>	<input type="checkbox"/>	<input type="checkbox"/>	 CHECK IF BRANCH OFFICE		
d.	<input type="checkbox"/>	<input type="checkbox"/>	<input type="checkbox"/>	 CHECK IF BRANCH OFFICE		
e.	<input type="checkbox"/>	<input type="checkbox"/>	<input type="checkbox"/>	 CHECK IF BRANCH OFFICE		
f.	<input type="checkbox"/>	<input type="checkbox"/>	<input type="checkbox"/>	 CHECK IF BRANCH OFFICE		

D. ORGANIZATIONAL CHART OF PROPOSED TEAM

X (Attached)



E. RESUMES OF KEY PERSONNEL PROPOSED FOR THIS CONTRACT

(Complete one Section E for each key person.)

12. NAME Scott Glaubitz, P.E., P.L.S.	13. ROLE IN THIS CONTRACT District Engineer	14. YEARS EXPERIENCE <table style="width: 100%; border-collapse: collapse;"> <tr> <td style="width: 50%; border-bottom: 1px solid black;">a. TOTAL</td> <td style="width: 50%; border-bottom: 1px solid black;">b. WITH CURRENT FIRM</td> </tr> <tr> <td style="text-align: center;">44</td> <td style="text-align: center;">41</td> </tr> </table>		a. TOTAL	b. WITH CURRENT FIRM	44	41
a. TOTAL	b. WITH CURRENT FIRM						
44	41						
15. FIRM NAME AND LOCATION (City and State) B.S.E. Consultants, Inc. Melbourne, FL							
16. EDUCATION (DEGREE AND SPECIALIZATION) University of Minnesota - B.S. Civil Engineering, 1979		17. CURRENT PROFESSIONAL REGISTRATION (STATE AND DISCIPLINE) FL, Professional Engineer, 1983; No. 33659 FL, Professional Land Surveyor, 1985, No. 4151 MN, Professional Engineer, 2008, No. 46855 NC, Professional Engineer, 2008, No. 021833					
18. OTHER PROFESSIONAL QUALIFICATIONS (Publications, Organizations, Training, Awards, etc.) American Society of Civil Engineers; National Society of Professional Engineers FES's State Committee - "Conservation & Environmental Quality Control" FES's local "Math Counts" Committee FES's local and state Scholarship Committee							

19. RELEVANT PROJECTS

(1) TITLE AND LOCATION (City and State) Everlands CDD (Palm Bay, FL)	(2) YEAR COMPLETED <table style="width: 100%; border-collapse: collapse;"> <tr> <td style="width: 50%; border-bottom: 1px solid black;">PROFESSIONAL SERVICES</td> <td style="width: 50%; border-bottom: 1px solid black;">CONSTRUCTION (If applicable)</td> </tr> <tr> <td style="text-align: center;">On-Going</td> <td style="text-align: center;">On-Going</td> </tr> </table>		PROFESSIONAL SERVICES	CONSTRUCTION (If applicable)	On-Going	On-Going
PROFESSIONAL SERVICES	CONSTRUCTION (If applicable)					
On-Going	On-Going					
(3) BRIEF DESCRIPTION (Brief scope, size, cost, etc.) AND SPECIFIC ROLE ✓ Check if project performed with current firm a. Supervised all services provided as District Engineer from inception of the District to present. Assisted in the formation of the District, prepared Engineer's Reports, cost estimates, and Engineering Studies as needed. Attendance at all District meetings and response to Supervisor's inquiries and directives.						
(1) TITLE AND LOCATION (City and State) Palm Vista Preserve East CDD (Palm Bay, FL)	(2) YEAR COMPLETED <table style="width: 100%; border-collapse: collapse;"> <tr> <td style="width: 50%; border-bottom: 1px solid black;">PROFESSIONAL SERVICES</td> <td style="width: 50%; border-bottom: 1px solid black;">CONSTRUCTION (If applicable)</td> </tr> <tr> <td style="text-align: center;">2008</td> <td style="text-align: center;">2008</td> </tr> </table>		PROFESSIONAL SERVICES	CONSTRUCTION (If applicable)	2008	2008
PROFESSIONAL SERVICES	CONSTRUCTION (If applicable)					
2008	2008					
(3) BRIEF DESCRIPTION (Brief scope, size, cost, etc.) AND SPECIFIC ROLE ✓ Check if project performed with current firm b. Served as District Engineer from inception of the District. Assisted in the formation of the District; General duties include attendance at all District meetings and response to Supervisor's inquiring and directives. Prepared Engineer's Reports, cost estimates, and Engineering Studies as needed. Completed detailed design and permitting of various District infrastructure projects, including roadways, stormwater management facilities, utilities and recreation improvements.						
(1) TITLE AND LOCATION (City and State) Baytree CDD (Melbourne, FL)	(2) YEAR COMPLETED <table style="width: 100%; border-collapse: collapse;"> <tr> <td style="width: 50%; border-bottom: 1px solid black;">PROFESSIONAL SERVICES</td> <td style="width: 50%; border-bottom: 1px solid black;">CONSTRUCTION (If applicable)</td> </tr> <tr> <td style="text-align: center;">2004</td> <td style="text-align: center;">2004</td> </tr> </table>		PROFESSIONAL SERVICES	CONSTRUCTION (If applicable)	2004	2004
PROFESSIONAL SERVICES	CONSTRUCTION (If applicable)					
2004	2004					
(3) BRIEF DESCRIPTION (Brief scope, size, cost, etc.) AND SPECIFIC ROLE ✓ Check if project performed with current firm c. Served as Assistant District Engineer for the Baytree CDD, responsible for the design, permitting and construction administration of infrastructure improvements for a ± 500 acre residential/golf course community.						
(1) TITLE AND LOCATION (City and State) Chaparral CDD (Palm Bay, FL)	(2) YEAR COMPLETED <table style="width: 100%; border-collapse: collapse;"> <tr> <td style="width: 50%; border-bottom: 1px solid black;">PROFESSIONAL SERVICES</td> <td style="width: 50%; border-bottom: 1px solid black;">CONSTRUCTION (If applicable)</td> </tr> <tr> <td style="text-align: center;">2008</td> <td style="text-align: center;">2009</td> </tr> </table>		PROFESSIONAL SERVICES	CONSTRUCTION (If applicable)	2008	2009
PROFESSIONAL SERVICES	CONSTRUCTION (If applicable)					
2008	2009					
(3) BRIEF DESCRIPTION (Brief scope, size, cost, etc.) AND SPECIFIC ROLE ✓ Check if project performed with current firm d. Served as District Engineer from inception of the District to present. Assisted in the formation of the District, prepared Engineer's Reports, cost estimates, and Engineering Studies as needed. Attendance at all District meetings and response to Supervisor's inquiries and directives. Completed detailed design, permitting and construction administration of various infrastructure projects, including roadways, stormwater management facilities and utilities.						
(1) TITLE AND LOCATION (City and State) Town of Grant-Valkaria (Grant-Valkaria, FL)	(2) YEAR COMPLETED <table style="width: 100%; border-collapse: collapse;"> <tr> <td style="width: 50%; border-bottom: 1px solid black;">PROFESSIONAL SERVICES</td> <td style="width: 50%; border-bottom: 1px solid black;">CONSTRUCTION (If applicable)</td> </tr> <tr> <td style="text-align: center;">On-Going</td> <td style="text-align: center;">On-Going</td> </tr> </table>		PROFESSIONAL SERVICES	CONSTRUCTION (If applicable)	On-Going	On-Going
PROFESSIONAL SERVICES	CONSTRUCTION (If applicable)					
On-Going	On-Going					
(3) BRIEF DESCRIPTION (Brief scope, size, cost, etc.) AND SPECIFIC ROLE ✓ Check if project performed with current firm e. Serves as the Town Engineer and Surveyor of Record since 2009. Surveying and Engineering Services for the +/-36 square mile Town consisting of the master stormwater planning, designing the Town Hall, park designing, road/street evaluations, pat reviews, and various other mapping, engineering, surveying and environmental services.						

E. RESUMES OF KEY PERSONNEL PROPOSED FOR THIS CONTRACT

(Complete one Section E for each key person.)

12. NAME Hassan Kamal, P.E.	13. ROLE IN THIS CONTRACT Engineering Team / QA-QC	14. YEARS EXPERIENCE <table style="width: 100%; border-collapse: collapse;"> <tr> <td style="width: 50%; border-bottom: 1px solid black;">a. TOTAL</td> <td style="width: 50%; border-bottom: 1px solid black;">b. WITH CURRENT FIRM</td> </tr> <tr> <td style="text-align: center;">39</td> <td style="text-align: center;">33</td> </tr> </table>		a. TOTAL	b. WITH CURRENT FIRM	39	33
a. TOTAL	b. WITH CURRENT FIRM						
39	33						
15. FIRM NAME AND LOCATION (City and State) B.S.E. Consultants, Inc., Melbourne, FL							
16. EDUCATION (DEGREE AND SPECIALIZATION) University of Tennessee , B.S. Civil Engineering, 1983		17. CURRENT PROFESSIONAL REGISTRATION (STATE AND DISCIPLINE) FL, Professional Engineer, 1989; No. 41951					
18. OTHER PROFESSIONAL QUALIFICATIONS (Publications, Organizations, Training, Awards, etc.) American Society of Civil Engineers Florida Engineering Society							

19. RELEVANT PROJECTS

	(1) TITLE AND LOCATION (City and State)	(2) YEAR COMPLETED	
		PROFESSIONAL SERVICES	CONSTRUCTION (If applicable)
	Heritage Isle at Viera CDD (Viera, FL)	2013	2015
a.	(3) BRIEF DESCRIPTION (Brief scope, size, cost, etc.) AND SPECIFIC ROLE ✓ Check if project performed with current firm Served as the District Engineer from the inception of the Heritage Isle at Viera CDD (a ± 2,800 unit residential development, Phases 1-8); including preparation of all required Engineering Reports, cost estimates, design and permitting of the District's infrastructure improvement facilities, construction administration and assistance in establishment of maintenance operations and contracts for the District's infrastructure facilities.		
	Baytree CDD (Melbourne, FL)	2004	2004
b.	(3) BRIEF DESCRIPTION (Brief scope, size, cost, etc.) AND SPECIFIC ROLE ✓ Check if project performed with current firm Served as the District Engineer for the Baytree CDD, responsible for the design, permitting and construction administration of infrastructure improvements for a ± 500 acre residential/golf course community.		
	Viera East CDD	2000	2000
c.	(3) BRIEF DESCRIPTION (Brief scope, size, cost, etc.) AND SPECIFIC ROLE ✓ Check if project performed with current firm Served as the District Engineer from 1998-2000; provided engineering services for various infrastructure projects and assisted in the transition from a Developer controlled Board to a Resident controlled Board.		
	Viera Village One (Viera, FL)	On-Going	On-Going
d.	(3) BRIEF DESCRIPTION (Brief scope, size, cost, etc.) AND SPECIFIC ROLE ✓ Check if project performed with current firm Serves as the Engineer of Record for the +/-1,700 acre, +/- 4,300 residential unit development. Responsibilities include strategic master planning, design and permitting of the master stormwater management, utility (water, sewer, reuse), and roadway system improvements.		
	Viera Village Two (Viera, FL)	On-Going	On-Going
e.	(3) BRIEF DESCRIPTION (Brief scope, size, cost, etc.) AND SPECIFIC ROLE ✓ Check if project performed with current firm Serves as the Engineer of Record for the +/-3,000 acre, +/- 6,600 residential unit development. Responsibilities include strategic master planning, design and permitting of the master stormwater management, utility (water, sewer, reuse), and roadway system improvements.		

E. RESUMES OF KEY PERSONNEL PROPOSED FOR THIS CONTRACT
(Complete one Section E for each key person.)

12. NAME Ana Saunders, P.E.	13. ROLE IN THIS CONTRACT Engineering Team / Senior Project Engineer	14. YEARS EXPERIENCE a. TOTAL 22 b. WITH CURRENT FIRM 22	
15. FIRM NAME AND LOCATION (City and State) B.S.E. Consultants, Inc., Melbourne, FL			
16. EDUCATION (DEGREE AND SPECIALIZATION) University of Florida, B.S.C.E., Emphasis in Civil Engineering, 2000		17. CURRENT PROFESSIONAL REGISTRATION (STATE AND DISCIPLINE) FL, Professional Engineer, 2006; No. 63908	
18. OTHER PROFESSIONAL QUALIFICATIONS (Publications, Organizations, Training, Awards, etc.) American Society of Civil Engineers Florida Engineering Society National Society of Professional Engineers			

19. RELEVANT PROJECTS

(1) TITLE AND LOCATION (City and State)	(2) YEAR COMPLETED	
	PROFESSIONAL SERVICES	CONSTRUCTION (If applicable)
a. Palm Vista Preserve East CDD (Palm Bay, FL) (3) BRIEF DESCRIPTION (Brief scope, size, cost, etc.) AND SPECIFIC ROLE Served as District Engineer from inception of the District to present. Assisted in the formation of the District; General duties include attendance at all District meetings and response to Supervisor's inquiring and directives. Prepared Engineer's Reports, cost estimates, and Engineering Studies as needed. Completed detailed design and permitting of various District infrastructure projects, including roadways, stormwater management facilities, utilities and recreation improvements.	2008	2008
b. Chaparral CDD (Palm Bay, FL) (3) BRIEF DESCRIPTION (Brief scope, size, cost, etc.) AND SPECIFIC ROLE Served as the Assistant District Engineer from inception of the District to present. Assisted in the formation of the District, prepared Engineer's Reports, cost estimates, and Engineering Studies as needed. Attendance at all District meetings and response to Supervisor's inquiries and directives. Assisted with detailed design, permitting and construction administration of various infrastructure projects, including roadways, stormwater management facilities and utilities.	2007	2009
c. Heritage Isle at Viera CDD (Viera, FL) (3) BRIEF DESCRIPTION (Brief scope, size, cost, etc.) AND SPECIFIC ROLE Serves as the District Engineer for Heritage Isle at Viera CDD (a ± 2,800 unit residential development); including preparation of all required Engineering Reports, cost estimates, design and permitting of the District's infrastructure improvement facilities, construction administration and assistance in establishment of maintenance operations and contracts for the District's infrastructure facilities. During this time, she assisted in transitioning the developer's completion in the community.	On-Going	On-Going
d. Viera Village One (Viera, FL) (3) BRIEF DESCRIPTION (Brief scope, size, cost, etc.) AND SPECIFIC ROLE Serves as the Senior Project Engineer on the design and permitting of the master stormwater management system and utility infrastructure systems that support the +/-1,700 acre, +/- 4,300 residential unit development. Involved in strategic master planning meetings with owner. Provided construction support and services for infrastructure improvements.	On-Going	On-Going
e. Malabar Springs Community Development District (Palm Bay, FL) (3) BRIEF DESCRIPTION (Brief scope, size, cost, etc.) AND SPECIFIC ROLE Serves as the interim District Engineer during formation of the District, serving an 885-unit residential development. Prepared Engineering Reports and cost estimates. Also completed detailed design and permitting of subdivision infrastructure, including roadways, stormwater management facilities, utilities, and recreation improvements.	On-Going	On-Going

E. RESUMES OF KEY PERSONNEL PROPOSED FOR THIS CONTRACT

(Complete one Section E for each key person.)

12. NAME Kenneth Ludwa, P.E.	13. ROLE IN THIS CONTRACT Engineering Team / Senior Project Engineer	a. TOTAL 29	b. WITH CURRENT FIRM 9
15. FIRM NAME AND LOCATION (City and State) B.S.E. Consultants, Inc., Melbourne, FL			
16. EDUCATION (DEGREE AND SPECIALIZATION) University of Washington (Master of Science, Civil Engineering), 1994 University of Illinois (B.S., Civil Engineering), 1992		17. CURRENT PROFESSIONAL REGISTRATION (STATE AND DISCIPLINE) FL, Professional Engineer, 2014 No. 77185 NC, Professional Engineer, 2013 No. 040434 WA, Professional Engineer, 1999 No. 36061	
18. OTHER PROFESSIONAL QUALIFICATIONS (Publications, Organizations, Training, Awards, etc.) American Association for the Advancement of Science – Science & Technology Policy Fellow Engineers Without Borders			

19. RELEVANT PROJECTS

	(1) TITLE AND LOCATION (City and State)	(2) YEAR COMPLETED	
		PROFESSIONAL SERVICES	CONSTRUCTION (If applicable)
	Everlands CDD (Palm Bay, FL)	On-Going	On-Going
a.	(3) BRIEF DESCRIPTION (Brief scope, size, cost, etc.) AND SPECIFIC ROLE ✓ Check if project performed with current firm Served as primary point of contact as District Engineer from inception of the District to present. Assisted in the formation of the District, prepared Engineer's Reports, cost estimates, and Engineering Studies as needed. Attendance at all District meetings and response to Supervisor's inquiries and directives.		
	Palm Vista Everlands – Subdivision Design and Permitting (Palm Bay, FL)	On-Going	On-Going
b.	(3) BRIEF DESCRIPTION (Brief scope, size, cost, etc.) AND SPECIFIC ROLE ✓ Check if project performed with current firm Designed and permitted the first phase of Everlands, a 158-unit, 50.4-acre residential subdivision in Palm Bay, Florida. Designed stormwater management system, water, sewer, and reuse systems, roadways, and pedestrian facilities, and obtained permits with the City of Palm Bay, St. Johns River Water Management District, Melbourne-Tillman Water Control District, and the Florida Department of Environmental Protection.		
	The Preserve at Tradition – Subdivision Design and Permitting (Port St. Lucie, FL)	2019	2019
c.	(3) BRIEF DESCRIPTION (Brief scope, size, cost, etc.) AND SPECIFIC ROLE ✓ Check if project performed with current firm Design, permitting, and construction engineering for the Preserve at Tradition, a residential subdivision with 110 units in Port St. Lucie, Florida. Designed the stormwater management system, water, sewer, and reuse systems, roadways, and pedestrian facilities. Coordinated project design and construction with the Tradition CDD, integrating the project with the CDD's master drainage system and ensuring that the project was consistent with CDD design requirements.		
	Viera DRI, Village One and Village Two Master Stormwater Plans (Viera, FL)	On-Going	On-Going
d.	(3) BRIEF DESCRIPTION (Brief scope, size, cost, etc.) AND SPECIFIC ROLE ✓ Check if project performed with current firm Modeled and designed the master stormwater management system for Viera Village 1 (±1,700 acres, ±4,300 residential units) and Village 2 (±3,000 acres, ±6,600 residential units). Responsible for design, permitting, and construction oversight (including cost estimating, bid preparation and evaluation, and contract administration) of these master systems.		
	Southampton Lakes – Subdivision Design and Permitting (Melbourne, FL)	On-Going	On-Going
e.	(3) BRIEF DESCRIPTION (Brief scope, size, cost, etc.) AND SPECIFIC ROLE ✓ Check if project performed with current firm Designed and permitted Southampton Lakes, a 103-unit, ±42.7-acre residential subdivision in Melbourne, Florida. Designed stormwater management, water, and sewer systems, roadways, and pedestrian facilities, and obtained permits with the City of Melbourne, St. Johns River Water Management District, and the Florida Department of Environmental Protection.		

E. RESUMES OF KEY PERSONNEL PROPOSED FOR THIS CONTRACT

(Complete one Section E for each key person.)

12. NAME Leslie E. Howard, P.S.M.	13. ROLE IN THIS CONTRACT Survey Director	a. TOTAL 41	b. WITH CURRENT FIRM 17
15. FIRM NAME AND LOCATION (City and State) B.S.E. Consultants, Inc., Melbourne, FL			
16. EDUCATION (DEGREE AND SPECIALIZATION) Certified Project Manager, South Florida Water Management District		17. CURRENT PROFESSIONAL REGISTRATION (STATE AND DISCIPLINE) FL, Professional Surveyor and Mapper, 1985 No. 5611	
18. OTHER PROFESSIONAL QUALIFICATIONS (Publications, Organizations, Training, Awards, etc.) Florida Survey and Mapping Society			

19. RELEVANT PROJECTS

	(1) TITLE AND LOCATION (City and State)	(2) YEAR COMPLETED	
		PROFESSIONAL SERVICES	CONSTRUCTION (If applicable)
a.	Heritage Isle at Viera CDD (Viera, FL)	2013	2015
	(3) BRIEF DESCRIPTION (Brief scope, size, cost, etc.) AND SPECIFIC ROLE ✓ Check if project performed with current firm Surveying services for Heritage Isle at Viera CDD (a ±2,800-unit residential development), including topographic and boundary survey, survey control, construction layout, and as-built survey for District infrastructure construction projects.		
b.	Viera Village One (Viera, FL)	On-Going	On-Going
	(3) BRIEF DESCRIPTION (Brief scope, size, cost, etc.) AND SPECIFIC ROLE ✓ Check if project performed with current firm Surveying services for ±1,700-acre, ±4,300 residential unit development, including topographic and boundary survey, survey control, construction layout, and as-built survey for infrastructure construction projects. Prepared preliminary and final plats.		
c.	Viera Village Two (Viera, FL)	On-Going	On-Going
	(3) BRIEF DESCRIPTION (Brief scope, size, cost, etc.) AND SPECIFIC ROLE ✓ Check if project performed with current firm Surveying services for ±3,000-acre, ±6,600 residential unit development, including topographic and boundary survey, survey control, construction layout, and as-built survey for infrastructure construction projects. Preparation of preliminary and final plats.		
d.	St. Johns Preserve (Palm Bay, FL)	On-Going	On-Going
	(3) BRIEF DESCRIPTION (Brief scope, size, cost, etc.) AND SPECIFIC ROLE ✓ Check if project performed with current firm Topographic and boundary survey, tree survey, survey control, construction layout, and as-built survey for ±178-acre, ± 620-unit subdivision. Preparation of preliminary and final plats.		
e.	Palm Vista Everlands (Palm Bay, FL)	On-Going	On-Going
	(3) BRIEF DESCRIPTION (Brief scope, size, cost, etc.) AND SPECIFIC ROLE ✓ Check if project performed with current firm Topographic and boundary survey, tree survey, survey control, construction layout, and as-built survey for the first phase of Everlands, a 158-unit, ±50.4-acre residential subdivision in Palm Bay, Florida. Preparation of preliminary and final plats.		

F. EXAMPLE PROJECTS WHICH BEST ILLUSTRATE PROPOSED TEAM'S QUALIFICATIONS FOR THIS CONTRACT
(Present as many projects as requested by the agency, or 10 projects, if not specified. Complete one Section F for each project.)

20. EXAMPLE PROJECT KEY NUMBER

1

21. TITLE AND LOCATION (City and State)

Everlands Community Development District (Palm Bay, FL)

22. YEAR COMPLETED

PROFESSIONAL SERVICES

On-Going

CONSTRUCTION (If applicable)

___ On-Going

23. PROJECT OWNER'S INFORMATION

a. PROJECT OWNER

Everlands Community Development District

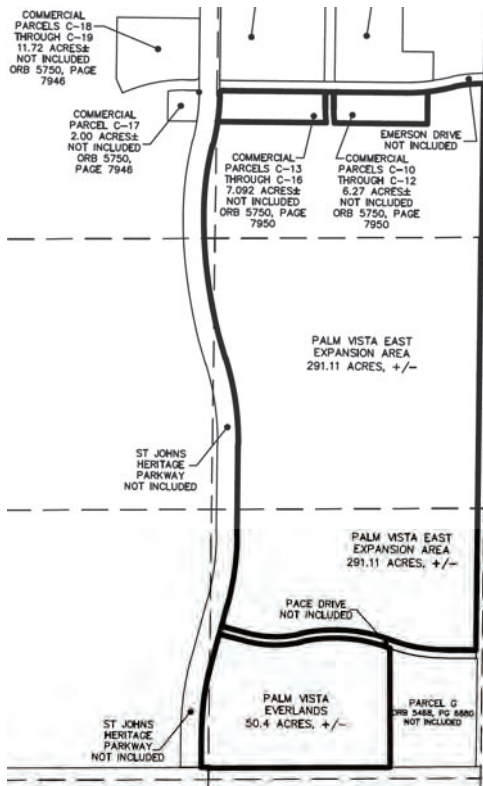
b. POINT OF CONTACT

Frank Sakuma, District Manager

c. POINT OF CONTACT TELEPHONE NUMBER

(772) 345-5119

24. BRIEF DESCRIPTION OF PROJECT AND RELEVANCE TO THIS CONTRACT



SCOPE

Assisted in the formation of the District, prepared Engineer's Reports, cost estimates, and Engineering Studies as needed. Attendance at all District meetings and response to Supervisor's inquiries and directives.

COST

\$25,000.00 (CDD only, not incl. development)

SIZE

± 341.51 acres / ± 1,002 residential units

SERVICES

- ✚ Civil Engineering
- ✚ Development
- ✚ Environmental Services
- ✚ Permitting
- ✚ Surveying
- ✚ District Board Meetings

25. FIRMS FROM SECTION C INVOLVED WITH THIS PROJECT

a.	(1) FIRM NAME B.S.E. Consultants, Inc.	(2) FIRM LOCATION(City and State) Melbourne, FL	(3) ROLE Engineer of Record, Land Surveyor, Environmental Services, District Engineer
b.	(1) FIRM NAME	(2) FIRM LOCATION(City and State)	(3) ROLE
c.	(1) FIRM NAME	(2) FIRM LOCATION(City and State)	(3) ROLE
d.	(1) FIRM NAME	(2) FIRM LOCATION(City and State)	(3) ROLE
e.	(1) FIRM NAME	(2) FIRM LOCATION(City and State)	(3) ROLE
f.	(1) FIRM NAME	(2) FIRM LOCATION(City and State)	(3) ROLE

F. EXAMPLE PROJECTS WHICH BEST ILLUSTRATE PROPOSED TEAM'S QUALIFICATIONS FOR THIS CONTRACT
(Present as many projects as requested by the agency, or 10 projects, if not specified. Complete one Section F for each project.)

20. EXAMPLE PROJECT KEY NUMBER

2

21. TITLE AND LOCATION (City and State)

Palm Vista Preserve East CDD (Palm Bay, FL)

22. YEAR COMPLETED

PROFESSIONAL SERVICES

2008

CONSTRUCTION (If applicable)

—

23. PROJECT OWNER'S INFORMATION

a. PROJECT OWNER

Palm Vista Preserve East CDD

b. POINT OF CONTACT

Vivian Carvalho, District Manager

c. POINT OF CONTACT TELEPHONE NUMBER

407-472-2471 (Rizzetta & Company)

24. BRIEF DESCRIPTION OF PROJECT AND RELEVANCE TO THIS CONTRACT



SCOPE

General duties include attendance at all District meetings, and response to Supervisor's inquiries and directives. Specific duties include the design, and permitting for various District infrastructure projects, including roadway, utilities, drainage, and landscape improvements. BSE also prepared an Engineering Report and provided numerous cost estimates for the bonding process.

COST

✚ \$25,000.00 (CDD only, not development)

SIZE

✚ ± 621 acres / ± 932 residential units

SERVICES

- ✚ Civil Engineering
- ✚ Development
- ✚ Environmental Services
- ✚ Permitting
- ✚ Surveying
- ✚ District Board Meetings

25. FIRMS FROM SECTION C INVOLVED WITH THIS PROJECT

a.	(1) FIRM NAME B.S.E. Consultants, Inc.	(2) FIRM LOCATION(City and State) Melbourne, FL	(3) ROLE Engineer of Record, Land Surveyor, Environmental Services, District Engineer
b.	(1) FIRM NAME	(2) FIRM LOCATION(City and State)	(3) ROLE
c.	(1) FIRM NAME	(2) FIRM LOCATION(City and State)	(3) ROLE
d.	(1) FIRM NAME	(2) FIRM LOCATION(City and State)	(3) ROLE
e.	(1) FIRM NAME	(2) FIRM LOCATION(City and State)	(3) ROLE
f.	(1) FIRM NAME	(2) FIRM LOCATION(City and State)	(3) ROLE

F. EXAMPLE PROJECTS WHICH BEST ILLUSTRATE PROPOSED TEAM'S QUALIFICATIONS FOR THIS CONTRACT
(Present as many projects as requested by the agency, or 10 projects, if not specified. Complete one Section F for each project.)

20. EXAMPLE PROJECT KEY NUMBER

3

21. TITLE AND LOCATION (City and State)

Baytree CDD (Melbourne, FL)

22. YEAR COMPLETED

PROFESSIONAL SERVICES

2004

CONSTRUCTION (If applicable)

2004

23. PROJECT OWNER'S INFORMATION

a. PROJECT OWNER
Baytree CDD

b. POINT OF CONTACT
Jason Showe, District Manager

c. POINT OF CONTACT TELEPHONE NUMBER
407-841-5524 (Governmental Management Services Central Florida, LLC)

24. BRIEF DESCRIPTION OF PROJECT AND RELEVANCE TO THIS CONTRACT

PROJECT

General duties include attendance at all District meetings, response to Supervisor's inquiries and directives, establishing and monitoring of various service contracts (Landscape Maintenance, Aquatic Maintenance, and Security), and response to residents' questions. Specific duties include the design, permitting, and construction administration for various District infrastructure projects, including roadway, utilities, drainage, recreational, and landscape improvements. Specific projects are as listed below:

- Phases 1-3 Infrastructure Improvements: Planning, design, permitting, and construction administration for the initial development phase, providing drainage, roadways, and utilities to +/-932 residential lots, the Baytree Golf Course and the Clubhouse Complex.
- Baytree Drive Right-of-Way Landscape Improvements: Landscaping and irrigation design for the right-of-way and landscape easement areas along the Baytree Drive right-of-way.
- Baytree Park Improvements: Design, permitting, and construction services for the Baytree Park Facility, including tennis courts, play area, swimming pool, cabana, and parking areas.
- Baytree CDD – Wetland Monitoring: Development and maintenance of a comprehensive wetland monitoring and reporting program for all wetland mitigation areas in conformance with St. Johns River Water Management District criteria.



COST

\$665,000.00

SIZE

± 621 acres / ± 932 residential units

SERVICES

- Civil Engineering
- Construction Administration
- Development
- Environmental Services
- Permitting
- Surveying
- District Board Meetings

25. FIRMS FROM SECTION C INVOLVED WITH THIS PROJECT

a.	(1) FIRM NAME B.S.E. Consultants, Inc.	(2) FIRM LOCATION(City and State) Melbourne, FL	(3) ROLE Engineer of Record, Land Surveyor, Environmental Services, District Engineer
b.	(1) FIRM NAME	(2) FIRM LOCATION(City and State)	(3) ROLE
c.	(1) FIRM NAME	(2) FIRM LOCATION(City and State)	(3) ROLE
d.	(1) FIRM NAME	(2) FIRM LOCATION(City and State)	(3) ROLE
e.	(1) FIRM NAME	(2) FIRM LOCATION(City and State)	(3) ROLE
f.	(1) FIRM NAME	(2) FIRM LOCATION(City and State)	(3) ROLE

F. EXAMPLE PROJECTS WHICH BEST ILLUSTRATE PROPOSED TEAM'S QUALIFICATIONS FOR THIS CONTRACT
(Present as many projects as requested by the agency, or 10 projects, if not specified. Complete one Section F for each project.)

20. EXAMPLE PROJECT KEY NUMBER

4

21. TITLE AND LOCATION (City and State)

Viera East CDD (Viera, FL)

22. YEAR COMPLETED

PROFESSIONAL SERVICES

2000

CONSTRUCTION (If applicable)

2000

23. PROJECT OWNER'S INFORMATION

a. PROJECT OWNER
Viera East CDD

b. POINT OF CONTACT
Jason Showe, District Manager

c. POINT OF CONTACT TELEPHONE NUMBER
407-841-5524 (Governmental Management Services Central Florida, LLC)

24. BRIEF DESCRIPTION OF PROJECT AND RELEVANCE TO THIS CONTRACT



COST

✚ \$50,000.00 (CDD only, not development)

SIZE

✚ ± 2,825 acres / ± 3,210 residential units

SERVICES

- ✚ Civil Engineering
- ✚ Construction Administration
- ✚ Development
- ✚ Environmental Services
- ✚ Permitting
- ✚ Surveying
- ✚ District Board Meetings

PROJECT

BSE served as the District Engineer for the Viera East CDD from 1998 to 2002. General duties include attendance at all District meetings, response to Supervisor's inquiries and directives, establishing and monitoring of various service contracts (Landscape Maintenance, Aquatic Maintenance, and Security), and response to residents' questions. Specific duties include the design, permitting, and construction administration for various District infrastructure projects, including roadway, utilities, drainage, recreational, and landscape improvements. Specific projects are as listed below:

- Murrell Road Four-Lane Widening, North Segment: Design, permitting and construction administration for ± 2.75 miles of two-lane widening improvements for a major collector roadway within the Viera community.
- Murrell Road Four-Lane Widening, South Segment: Design and permitting for ± 1.0 miles of two-lane widening improvements, intersection improvements and signal modifications for a major collector roadway within the Viera community.
- Parcel U, X Utility Infrastructure Improvements: Design, permitting and contract administration for a lift station, gravity sewer and potable water improvements to service a portion of the Viera East CDD.

25. FIRMS FROM SECTION C INVOLVED WITH THIS PROJECT

a.	(1) FIRM NAME B.S.E. Consultants, Inc.	(2) FIRM LOCATION(City and State) Melbourne, FL	(3) ROLE Engineer of Record, Land Surveyor, Environmental Services, District Engineer
b.	(1) FIRM NAME	(2) FIRM LOCATION(City and State)	(3) ROLE
c.	(1) FIRM NAME	(2) FIRM LOCATION(City and State)	(3) ROLE
d.	(1) FIRM NAME	(2) FIRM LOCATION(City and State)	(3) ROLE
e.	(1) FIRM NAME	(2) FIRM LOCATION(City and State)	(3) ROLE
f.	(1) FIRM NAME	(2) FIRM LOCATION(City and State)	(3) ROLE

F. EXAMPLE PROJECTS WHICH BEST ILLUSTRATE PROPOSED TEAM'S QUALIFICATIONS FOR THIS CONTRACT <i>(Present as many projects as requested by the agency, or 10 projects, if not specified. Complete one Section F for each project.)</i>	20. EXAMPLE PROJECT KEY NUMBER <p style="text-align: center;">5</p>
---	--

21. TITLE AND LOCATION (City and State) Heritage Isle at Viera CDD (Viera, FL)	22. YEAR COMPLETED	
	PROFESSIONAL SERVICES On Going	CONSTRUCTION (If applicable) 2016

23. PROJECT OWNER'S INFORMATION

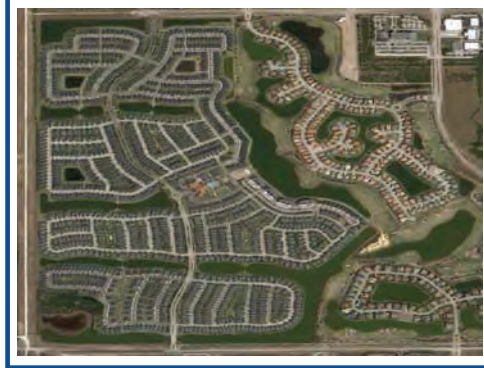
a. PROJECT OWNER Heritage Isle at Viera CDD	b. POINT OF CONTACT Anthony Jeancola, District Manager	c. POINT OF CONTACT TELEPHONE NUMBER 407-472-2471 (Rizzetta & Company, Inc.)
--	---	---

24. BRIEF DESCRIPTION OF PROJECT AND RELEVANCE TO THIS CONTRACT

PROJECT

Heritage Isle at Viera CDD District Engineer: General duties include attendance at all District meetings, and response to Supervisor’s inquiries and directives. Specific duties include the design, permitting, and construction administration for various District infrastructure projects, including roadway, utilities, drainage, recreational, and landscape improvements. Specific projects are as listed below:

- Phase 1-8 Infrastructure Improvements: Planning, design, permitting, and construction administration for the initial development phase, providing drainage, roadways, and utilities to the ± 2,800 residential units.
- Legacy Boulevard Right-of-Way Landscape Improvements: Construction Administration for Landscaping and irrigation for the right-of-way and landscape easement areas along the Legacy Boulevard right-of-way.
- Master Stormwater Management Infrastructure Improvements: Planning and design for the Master Stormwater improvements, including a reuse/recharge system, required to service the Community.



COST

- ✚ CDD - \$300,000 (to date)
- ✚ Development - \$925,000.00

SIZE

- ✚ ± 500 acres / ± 2,800 residential units
- ✚ +/- 23,000 sf clubhouse facility

SERVICES

- ✚ Civil Engineering
- ✚ Construction Administration
- ✚ Development
- ✚ Environmental Services
- ✚ Permitting
- ✚ Surveying
- ✚ District Board Meetings

25. FIRMS FROM SECTION C INVOLVED WITH THIS PROJECT

a.	(1) FIRM NAME B.S.E. Consultants, Inc.	(2) FIRM LOCATION(City and State) Melbourne, FL	(3) ROLE Engineer of Record, Land Surveyor, Environmental Services, District Engineer
b.	(1) FIRM NAME	(2) FIRM LOCATION(City and State)	(3) ROLE
c.	(1) FIRM NAME	(2) FIRM LOCATION(City and State)	(3) ROLE
d.	(1) FIRM NAME	(2) FIRM LOCATION(City and State)	(3) ROLE
e.	(1) FIRM NAME	(2) FIRM LOCATION(City and State)	(3) ROLE
f.	(1) FIRM NAME	(2) FIRM LOCATION(City and State)	(3) ROLE

F. EXAMPLE PROJECTS WHICH BEST ILLUSTRATE PROPOSED TEAM'S QUALIFICATIONS FOR THIS CONTRACT <i>(Present as many projects as requested by the agency, or 10 projects, if not specified. Complete one Section F for each project.)</i>		20. EXAMPLE PROJECT KEY NUMBER <div>6</div>				
21. TITLE AND LOCATION (City and State) Chaparral CDD (Palm Bay, FL)		22. YEAR COMPLETED <table border="1"> <tr> <td>PROFESSIONAL SERVICES</td> <td>CONSTRUCTION (If applicable)</td> </tr> <tr> <td>2007</td> <td>2009</td> </tr> </table>	PROFESSIONAL SERVICES	CONSTRUCTION (If applicable)	2007	2009
PROFESSIONAL SERVICES	CONSTRUCTION (If applicable)					
2007	2009					
23. PROJECT OWNER'S INFORMATION						
a. PROJECT OWNER Chaparral CDD	b. POINT OF CONTACT Vivian Carvalho, District Manager	c. POINT OF CONTACT TELEPHONE NUMBER 407-472-2471 (Rizzetta & Company)				
24. BRIEF DESCRIPTION OF PROJECT AND RELEVANCE TO THIS CONTRACT						
<div> <div> PROJECT <p>General duties include attendance at all District meetings, and response to Supervisor's inquiries and directives. Specific duties include the design, permitting for the entire development including master plans for mass grading, stormwater facilities, and utility improvements (water, gravity sewer and lift station). BSE also designed and permitted offsite roadway widening and turn lane improvements to serve the project.</p> <p>Construction Management and Administration Services were provided for the first phase of development.</p> </div> <div> <div> COST \$1,100,000.00 (Consultant Fees) </div> <div> SIZE ± 350 acres / ± 750 residential units </div> <div> SERVICES <ul style="list-style-type: none"> Civil Engineering Construction Administration Development Environmental Services Permitting Surveying District Board Meetings </div> </div> <div> </div> </div>						
25. FIRMS FROM SECTION C INVOLVED WITH THIS PROJECT						
a.	(1) FIRM NAME B.S.E. Consultants, Inc.	(2) FIRM LOCATION(City and State) Melbourne, FL	(3) ROLE Engineer of Record, Land Surveyor, Environmental Services, District Engineer			
b.	(1) FIRM NAME	(2) FIRM LOCATION(City and State)	(3) ROLE			
c.	(1) FIRM NAME	(2) FIRM LOCATION(City and State)	(3) ROLE			
d.	(1) FIRM NAME	(2) FIRM LOCATION(City and State)	(3) ROLE			
e.	(1) FIRM NAME	(2) FIRM LOCATION(City and State)	(3) ROLE			
f.	(1) FIRM NAME	(2) FIRM LOCATION(City and State)	(3) ROLE			

F. EXAMPLE PROJECTS WHICH BEST ILLUSTRATE PROPOSED TEAM'S QUALIFICATIONS FOR THIS CONTRACT
(Present as many projects as requested by the agency, or 10 projects, if not specified. Complete one Section F for each project.)

20. EXAMPLE PROJECT KEY NUMBER

7

21. TITLE AND LOCATION (City and State)

Viera Village One and Village Two (Viera, FL)

22. YEAR COMPLETED

PROFESSIONAL SERVICES

On-Going

CONSTRUCTION (If applicable)

On-Going

23. PROJECT OWNER'S INFORMATION

a. PROJECT OWNER

The Viera Company

b. POINT OF CONTACT

Mary Ellen McKibben

c. POINT OF CONTACT TELEPHONE NUMBER

321-242-1200

24. BRIEF DESCRIPTION OF PROJECT AND RELEVANCE TO THIS CONTRACT

PROJECT

BSE developed the master stormwater management, utility (water, sewer and reuse) systems, and roadway networks for Viera Village 1, a $\pm 1,700$ acre, $\pm 4,300$ residential unit development and Viera Village 2, a $\pm 3,000$ acre mixed use development with $\pm 6,600$ residential units in Viera, Florida. We are the Engineer of Record for the design, permitting, and construction process (including cost estimating, bid preparation and evaluation, and contract administration) of these master systems. We also provided construction stake-out and as-built services for much of these improvements.

The master stormwater system is an interconnected, cascading system comprised of more than 140 lakes with multiple control points. Additionally, this system was designed to incorporate and hydrate the higher functioning area wetlands turning them into community assets.

The utility improvements consist of main trunk lines with multiple interconnecting pipes to provide efficient and cost-effective systems.



COST

\$523,000.00 (to date)

SIZE

$\pm 4,700$ acres

$\pm 10,900$ residential units

SERVICES

- ✚ Civil Engineering
- ✚ Construction Administration
- ✚ Development
- ✚ Permitting
- ✚ Surveying

25. FIRMS FROM SECTION C INVOLVED WITH THIS PROJECT

a.	(1) FIRM NAME B.S.E. Consultants, Inc.	(2) FIRM LOCATION(City and State) Melbourne, FL	(3) ROLE Engineer of Record, Land Surveyor, Environmental Services
b.	(1) FIRM NAME	(2) FIRM LOCATION(City and State)	(3) ROLE
c.	(1) FIRM NAME	(2) FIRM LOCATION(City and State)	(3) ROLE
d.	(1) FIRM NAME	(2) FIRM LOCATION(City and State)	(3) ROLE
e.	(1) FIRM NAME	(2) FIRM LOCATION(City and State)	(3) ROLE
f.	(1) FIRM NAME	(2) FIRM LOCATION(City and State)	(3) ROLE

F. EXAMPLE PROJECTS WHICH BEST ILLUSTRATE PROPOSED TEAM'S QUALIFICATIONS FOR THIS CONTRACT <i>(Present as many projects as requested by the agency, or 10 projects, if not specified. Complete one Section F for each project.)</i>		20. EXAMPLE PROJECT KEY NUMBER 8		
21. TITLE AND LOCATION (City and State) Viera Stewardship District (Viera, FL)		22. YEAR COMPLETED <table border="1"> <tr> <td>PROFESSIONAL SERVICES On-Going</td> <td>CONSTRUCTION (If applicable) On-Going</td> </tr> </table>	PROFESSIONAL SERVICES On-Going	CONSTRUCTION (If applicable) On-Going
PROFESSIONAL SERVICES On-Going	CONSTRUCTION (If applicable) On-Going			
23. PROJECT OWNER'S INFORMATION				
a. PROJECT OWNER Viera Stewardship District	b. POINT OF CONTACT Gary Moyer, Manager	c. POINT OF CONTACT TELEPHONE NUMBER 321-939-4301 (Moyer Management Group)		
24. BRIEF DESCRIPTION OF PROJECT AND RELEVANCE TO THIS CONTRACT				

PROJECT

BSE is the District Engineer for the Viera Stewardship District, a ±13,000 Special Assessment District located in Brevard County, Florida. We support the District’s responsibilities to maintain and manage stormwater, aquatic weed control, Preferred Cover Type (PCT) tree maintenance, street lighting and environmental conservation (Viera Wilderness Park) within its boundaries.

COST

🚧 \$17,500.00 (to date)

SIZE

🚧 ± 13,441.6 acres

SERVICES

- 🚧 Civil Engineering
- 🚧 Construction Administration
- 🚧 Development
- 🚧 Permitting
- 🚧 Surveying
- 🚧 District Board Meetings



25. FIRMS FROM SECTION C INVOLVED WITH THIS PROJECT			
a.	(1) FIRM NAME B.S.E. Consultants, Inc.	(2) FIRM LOCATION(City and State) Melbourne, FL	(3) ROLE Engineer of Record, Land Surveyor
b.	(1) FIRM NAME	(2) FIRM LOCATION(City and State)	(3) ROLE
c.	(1) FIRM NAME	(2) FIRM LOCATION(City and State)	(3) ROLE
d.	(1) FIRM NAME	(2) FIRM LOCATION(City and State)	(3) ROLE
e.	(1) FIRM NAME	(2) FIRM LOCATION(City and State)	(3) ROLE
f.	(1) FIRM NAME	(2) FIRM LOCATION(City and State)	(3) ROLE



F. EXAMPLE PROJECTS WHICH BEST ILLUSTRATE PROPOSED TEAM'S QUALIFICATIONS FOR THIS CONTRACT

(Present as many projects as requested by the agency, or 10 projects, if not specified. Complete one Section F for each project.)

20. EXAMPLE PROJECT KEY NUMBER

9

21. TITLE AND LOCATION (City and State)

Malabar Springs Community Development District (Palm Bay, FL)

22. YEAR COMPLETED

PROFESSIONAL SERVICES

On-Going

CONSTRUCTION (If applicable)

On-Going

23. PROJECT OWNER'S INFORMATION

a. PROJECT OWNER

Malabar Holdings Group, LLC

b. POINT OF CONTACT

Keith Trace

c. POINT OF CONTACT TELEPHONE NUMBER

321-624-3126

24. BRIEF DESCRIPTION OF PROJECT AND RELEVANCE TO THIS CONTRACT



PROJECT

BSE is the interim District Engineer during formation of the District, serving an 885-unit residential development. BSE prepared Engineering Report and cost estimates. BSE also completed detailed design and permitting of subdivision infrastructure, including roadways, stormwater management facilities, utilities, and recreation improvements. We obtained permits with the City of Palm Bay, St. Johns River Water Management District, Melbourne-Tillman Water Control District, and the Florida Department of Environmental Protection. Construction has just kicked-off and BSE is providing construction engineering and inspection services.

COST

± \$3,800.00 (to date)

SIZE

± 291 acres / ± 885 residential units

SERVICES

- ✚ Civil Engineering
- ✚ Construction Administration
- ✚ Development
- ✚ Permitting
- ✚ Surveying

25. FIRMS FROM SECTION C INVOLVED WITH THIS PROJECT

a.	(1) FIRM NAME B.S.E. Consultants, Inc.	(2) FIRM LOCATION(City and State) Melbourne, FL	(3) ROLE District Engineer
b.	(1) FIRM NAME	(2) FIRM LOCATION(City and State)	(3) ROLE
c.	(1) FIRM NAME	(2) FIRM LOCATION(City and State)	(3) ROLE
d.	(1) FIRM NAME	(2) FIRM LOCATION(City and State)	(3) ROLE
e.	(1) FIRM NAME	(2) FIRM LOCATION(City and State)	(3) ROLE
f.	(1) FIRM NAME	(2) FIRM LOCATION(City and State)	(3) ROLE

F. EXAMPLE PROJECTS WHICH BEST ILLUSTRATE PROPOSED TEAM'S QUALIFICATIONS FOR THIS CONTRACT <i>(Present as many projects as requested by the agency, or 10 projects, if not specified. Complete one Section F for each project.)</i>		20. EXAMPLE PROJECT KEY NUMBER 10
21. TITLE AND LOCATION (City and State) Everlands (Palm Bay, FL)	22. YEAR COMPLETED	
	PROFESSIONAL SERVICES On-Going	CONSTRUCTION (If applicable) On-Going
23. PROJECT OWNER'S INFORMATION		
a. PROJECT OWNER Lennar Homes, LLC	b. POINT OF CONTACT Greg Pettibon	c. POINT OF CONTACT TELEPHONE NUMBER 561-345-6700
24. BRIEF DESCRIPTION OF PROJECT AND RELEVANCE TO THIS CONTRACT		

PROJECT

BSE designed and permitted the first phase of Everlands, a +/- 50 acre, 158-unit residential subdivision in Palm Bay, Florida. BSE designed the stormwater management system, water, sewer, and reuse systems, roadways, and pedestrian facilities. We obtained permits with the City of Palm Bay, St. Johns River Water Management District, Melbourne-Tillman Water Control District, and the Florida Department of Environmental Protection. BSE is also contracted to provide construction engineering and inspection.

COST

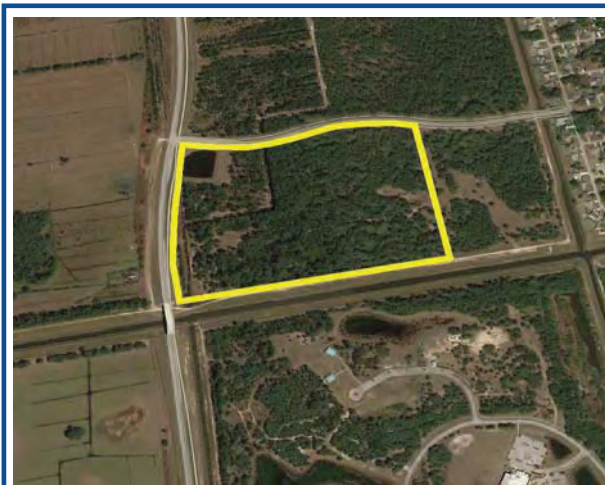
🚧 \$314,000.00 (to date)

SIZE

🚧 ± 50.4 acres / ± 158 residential units

SERVICES

- 🚧 Civil Engineering
- 🚧 Construction Administration
- 🚧 Development
- 🚧 Permitting
- 🚧 Surveying



25. FIRMS FROM SECTION C INVOLVED WITH THIS PROJECT

a.	(1) FIRM NAME B.S.E. Consultants, Inc.	(2) FIRM LOCATION(City and State) Melbourne, FL	(3) ROLE Engineer of Record, Land Surveyor
b.	(1) FIRM NAME	(2) FIRM LOCATION(City and State)	(3) ROLE
c.	(1) FIRM NAME	(2) FIRM LOCATION(City and State)	(3) ROLE
d.	(1) FIRM NAME	(2) FIRM LOCATION(City and State)	(3) ROLE
e.	(1) FIRM NAME	(2) FIRM LOCATION(City and State)	(3) ROLE
f.	(1) FIRM NAME	(2) FIRM LOCATION(City and State)	(3) ROLE

G. KEY PERSONNEL PARTICIPATION IN EXAMPLE PROJECTS

[illegible]

29. EXAMPLE PROJECTS KEY

NO.	TITLE OF EXAMPLE PROJECT (FROM SECTION F)	NO.	TITLE OF EXAMPLE PROJECT (FROM SECTION F)
1	Everlands CDD	6	Chaparral CDD
2	Palm Vista Preserve East CDD	7	Viera Village One and Village Two
3	Baytree CDD	8	Viera Stewardship District
4	Viera East CDD	9	St. Johns Preserve
5	Heritage Isle at Viera CDD	10	Everlands

1 SOLICITATION NUMBER (if any)

(If a firm has branch offices, complete for each specific branch office seeking work.)

9. EMPLOYEES BY DISCIPLINE				10. PROFILE OF FIRM'S EXPERIENCE AND ANNUAL AVERAGE REVENUE FOR LAST 5 YEARS		
a Function Code	b Discipline	c No of Employees		a Profile Code	b Experience	c Revenue Index number (see below)
		(1) FIRM	(2) BRANCH			
12	Civil Engineer	6		C15	Construction Management	See Below
02	Administrative	4		C16	Construction Surveying	See Below
38	Land Surveyor	1		C18	Cost Estimating, Cost Engineering, etc.	See Below
08	CADD Technician	10		H11	Housing (Residential)	See Below
				L02	Land Surveying	See Below
				P05	Planning (Community)	See Below
				P06	Planning (Site)	See Below
				S10	Surveying, Platting, etc.	See Below
				T04	Topographic Surveying & Mapping	See Below
				W02	Water Resources, etc.	See Below
				Z01	Zoning, Land Use Studies	See Below
					Revenue Year - 2017	6
					Revenue Year - 2018	6
					Revenue Year - 2019	6
					Revenue Year - 2020	6
					Revenue Year - 2021	6
					Revenue Year - 2022	6
	Other Employees	11				
	Total	31				

STANDARD FORM 330 (REV 8/2016) PAGE 19



TAB 5 - CLIENT REFERENCES

TAB 5 - CLIENT REFERENCES

We are proud to offer the following Client References:

Brian Mendes, Rizzetta & Company, Inc.

Heritage Isle CDD Manager
8529 South Park Circle
Suite #330
Orlando, FL 32819
(407) 472-2471
bmendes@rizzetta.com



Mary Ellen McKibben, The Viera Company

7380 Murrell Road
Suite #201
Viera, FL 32940
(321) 242-1200 x 4516
maryellen.mckibben@duda.com



Johnny T. Lynch III, DR Horton

1430 Culver Drive, NE
Palm Bay, FL 32907
(321) 654-2094
JTLynch@drhorton.com



Mike Casey, Town of Indialantic

216 Fifth Avenue
Indialantic, FL 32903
(321) 723-2242
mcasey@indialantic.com



Wesley Haber, Hopping Green and Sams, P.A.

119 South Monroe Street, Suite 300
Tallahassee, FL 32301
(850) 425.2345
WesH@hgslaw.com





TAB 6 - INSURANCE



CERTIFICATE OF LIABILITY INSURANCE

DATE (MM/DD/YYYY)

08/01/2023

THIS CERTIFICATE IS ISSUED AS A MATTER OF INFORMATION ONLY AND CONFERS NO RIGHTS UPON THE CERTIFICATE HOLDER. THIS CERTIFICATE DOES NOT AFFIRMATIVELY OR NEGATIVELY AMEND, EXTEND OR ALTER THE COVERAGE AFFORDED BY THE POLICIES BELOW. THIS CERTIFICATE OF INSURANCE DOES NOT CONSTITUTE A CONTRACT BETWEEN THE ISSUING INSURER(S), AUTHORIZED REPRESENTATIVE OR PRODUCER, AND THE CERTIFICATE HOLDER.

IMPORTANT: If the certificate holder is an **ADDITIONAL INSURED**, the policy(ies) must have **ADDITIONAL INSURED** provisions or be endorsed. If **SUBROGATION IS WAIVED**, subject to the terms and conditions of the policy, certain policies may require an endorsement. A statement on this certificate does not confer rights to the certificate holder in lieu of such endorsement(s).

PRODUCER LRA Insurance P.O. Box 948173 Maitland FL 32794	CONTACT NAME: Elizabeth Gonzales Quiles PHONE (A/C, No, Ext): (407) 838-3445 FAX (A/C, No): (407) 838-3460 E-MAIL ADDRESS: erivera@lrainsurance.com																					
INSURED BSE Consultants, Inc. 312 South Harbor City Blvd Suite 4 Melbourne FL 32901	<table><tr><th colspan="2">INSURER(S) AFFORDING COVERAGE</th><th>NAIC #</th></tr><tr><td>INSURER A:</td><td>Travelers Property Casualty Co</td><td>25674</td></tr><tr><td>INSURER B:</td><td>Evanston Insurance Company</td><td>35378</td></tr><tr><td>INSURER C:</td><td>Bridgefield Employers Ins Co</td><td>10701</td></tr><tr><td>INSURER D:</td><td></td><td></td></tr><tr><td>INSURER E:</td><td></td><td></td></tr><tr><td>INSURER F:</td><td></td><td></td></tr></table>	INSURER(S) AFFORDING COVERAGE		NAIC #	INSURER A:	Travelers Property Casualty Co	25674	INSURER B:	Evanston Insurance Company	35378	INSURER C:	Bridgefield Employers Ins Co	10701	INSURER D:			INSURER E:			INSURER F:		
INSURER(S) AFFORDING COVERAGE		NAIC #																				
INSURER A:	Travelers Property Casualty Co	25674																				
INSURER B:	Evanston Insurance Company	35378																				
INSURER C:	Bridgefield Employers Ins Co	10701																				
INSURER D:																						
INSURER E:																						
INSURER F:																						

COVERAGES**CERTIFICATE NUMBER:** 23/24**REVISION NUMBER:**

THIS IS TO CERTIFY THAT THE POLICIES OF INSURANCE LISTED BELOW HAVE BEEN ISSUED TO THE INSURED NAMED ABOVE FOR THE POLICY PERIOD INDICATED. NOTWITHSTANDING ANY REQUIREMENT, TERM OR CONDITION OF ANY CONTRACT OR OTHER DOCUMENT WITH RESPECT TO WHICH THIS CERTIFICATE MAY BE ISSUED OR MAY PERTAIN, THE INSURANCE AFFORDED BY THE POLICIES DESCRIBED HEREIN IS SUBJECT TO ALL THE TERMS, EXCLUSIONS AND CONDITIONS OF SUCH POLICIES. LIMITS SHOWN MAY HAVE BEEN REDUCED BY PAID CLAIMS.

INSR LTR	TYPE OF INSURANCE	ADDL INSD	SUBR WVD	POLICY NUMBER	POLICY EFF (MM/DD/YYYY)	POLICY EXP (MM/DD/YYYY)	LIMITS
A	<input checked="" type="checkbox"/> COMMERCIAL GENERAL LIABILITY <input type="checkbox"/> CLAIMS-MADE <input checked="" type="checkbox"/> OCCUR GEN'L AGGREGATE LIMIT APPLIES PER: <input type="checkbox"/> POLICY <input checked="" type="checkbox"/> PRO-JECT <input type="checkbox"/> LOC OTHER:			X-660-8332N605-PHX-23	08/01/2023	08/01/2024	EACH OCCURRENCE \$ 1,000,000 DAMAGE TO RENTED PREMISES (Ea occurrence) \$ 1,000,000 MED EXP (Any one person) \$ 5,000 PERSONAL & ADV INJURY \$ 1,000,000 GENERAL AGGREGATE \$ 2,000,000 PRODUCTS - COM/OP AGG \$ 2,000,000 \$
	AUTOMOBILE LIABILITY <input type="checkbox"/> ANY AUTO <input type="checkbox"/> OWNED AUTOS ONLY <input type="checkbox"/> SCHEDULED AUTOS <input type="checkbox"/> HIRED AUTOS ONLY <input type="checkbox"/> NON-OWNED AUTOS ONLY						COMBINED SINGLE LIMIT (Ea accident) \$ BODILY INJURY (Per person) \$ BODILY INJURY (Per accident) \$ PROPERTY DAMAGE (Per accident) \$ \$
B	<input checked="" type="checkbox"/> UMBRELLA LIAB <input type="checkbox"/> OCCUR <input checked="" type="checkbox"/> EXCESS LIAB <input type="checkbox"/> CLAIMS-MADE DED RETENTION \$			EZXS3124874	08/01/2023	08/01/2024	EACH OCCURRENCE \$ 5,000,000 AGGREGATE \$ 5,000,000 \$
C	WORKERS COMPENSATION AND EMPLOYERS' LIABILITY ANY PROPRIETOR/PARTNER/EXECUTIVE OFFICER/MEMBER EXCLUDED? (Mandatory in NH) If yes, describe under DESCRIPTION OF OPERATIONS below	Y/N Y	N/A	0830-42697	08/01/2023	08/01/2024	<input checked="" type="checkbox"/> PER STATUTE <input type="checkbox"/> OTH-ER E.L. EACH ACCIDENT \$ 1,000,000 E.L. DISEASE - EA EMPLOYEE \$ 1,000,000 E.L. DISEASE - POLICY LIMIT \$ 1,000,000
A	Inland Marine			QT-660-5D57704-2-TIL-23	08/01/2023	08/01/2024	Scheduled Equipment \$152,236

DESCRIPTION OF OPERATIONS / LOCATIONS / VEHICLES (ACORD 101, Additional Remarks Schedule, may be attached if more space is required)

CERTIFICATE HOLDER**CANCELLATION**

For Proposals Only

SHOULD ANY OF THE ABOVE DESCRIBED POLICIES BE CANCELLED BEFORE THE EXPIRATION DATE THEREOF, NOTICE WILL BE DELIVERED IN ACCORDANCE WITH THE POLICY PROVISIONS.

AUTHORIZED REPRESENTATIVE

© 1988-2015 ACORD CORPORATION. All rights reserved.

ACORD™

CERTIFICATE OF LIABILITY INSURANCE

DATE (MM/DD/YYYY)

4/07/2023

THIS CERTIFICATE IS ISSUED AS A MATTER OF INFORMATION ONLY AND CONFERS NO RIGHTS UPON THE CERTIFICATE HOLDER. THIS CERTIFICATE DOES NOT AFFIRMATIVELY OR NEGATIVELY AMEND, EXTEND OR ALTER THE COVERAGE AFFORDED BY THE POLICIES BELOW. THIS CERTIFICATE OF INSURANCE DOES NOT CONSTITUTE A CONTRACT BETWEEN THE ISSUING INSURER(S), AUTHORIZED REPRESENTATIVE OR PRODUCER, AND THE CERTIFICATE HOLDER.

IMPORTANT: If the certificate holder is an ADDITIONAL INSURED, the policy(ies) must have ADDITIONAL INSURED provisions or be endorsed. If SUBROGATION IS WAIVED, subject to the terms and conditions of the policy, certain policies may require an endorsement. A statement on this certificate does not confer any rights to the certificate holder in lieu of such endorsement(s).

PRODUCER USI Insurance Services, LLC 2502 N Rocky Point Drive Suite 400 Tampa, FL 33607	CONTACT NAME: PHONE (A/C, No, Ext): 813 321-7500 FAX (A/C, No): E-MAIL ADDRESS: INSURER(S) AFFORDING COVERAGE INSURER A: XL Specialty Insurance Company INSURER B: INSURER C: INSURER D: INSURER E: INSURER F:	NAIC # 37885
INSURED BSE Consultants, Inc. 312 S Harbor City Blvd Melbourne, FL 32901		

COVERAGES

CERTIFICATE NUMBER:

REVISION NUMBER:

THIS IS TO CERTIFY THAT THE POLICIES OF INSURANCE LISTED BELOW HAVE BEEN ISSUED TO THE INSURED NAMED ABOVE FOR THE POLICY PERIOD INDICATED. NOTWITHSTANDING ANY REQUIREMENT, TERM OR CONDITION OF ANY CONTRACT OR OTHER DOCUMENT WITH RESPECT TO WHICH THIS CERTIFICATE MAY BE ISSUED OR MAY PERTAIN, THE INSURANCE AFFORDED BY THE POLICIES DESCRIBED HEREIN IS SUBJECT TO ALL THE TERMS, EXCLUSIONS AND CONDITIONS OF SUCH POLICIES. LIMITS SHOWN MAY HAVE BEEN REDUCED BY PAID CLAIMS.

INSR LTR	TYPE OF INSURANCE	ADDL INSR	SUBR WVD	POLICY NUMBER	POLICY EFF (MM/DD/YYYY)	POLICY EXP (MM/DD/YYYY)	LIMITS
	COMMERCIAL GENERAL LIABILITY <input type="checkbox"/> CLAIMS-MADE <input type="checkbox"/> OCCUR GEN'L AGGREGATE LIMIT APPLIES PER: <input type="checkbox"/> POLICY <input type="checkbox"/> PRO-JECT <input type="checkbox"/> LOC OTHER:						EACH OCCURRENCE \$ DAMAGE TO RENTED PREMISES (Ea occurrence) \$ MED EXP (Any one person) \$ PERSONAL & ADV INJURY \$ GENERAL AGGREGATE \$ PRODUCTS - COMP/OP AGG \$ \$
	AUTOMOBILE LIABILITY <input type="checkbox"/> ANY AUTO OWNED AUTOS ONLY <input type="checkbox"/> HIRED AUTOS ONLY <input type="checkbox"/> SCHEDULED AUTOS NON-OWNED AUTOS ONLY						COMBINED SINGLE LIMIT (Ea accident) \$ BODILY INJURY (Per person) \$ BODILY INJURY (Per accident) \$ PROPERTY DAMAGE (Per accident) \$ \$
	UMBRELLA LIAB <input type="checkbox"/> OCCUR EXCESS LIAB <input type="checkbox"/> CLAIMS-MADE DED <input type="checkbox"/> RETENTION \$						EACH OCCURRENCE \$ AGGREGATE \$ \$
	WORKERS COMPENSATION AND EMPLOYERS' LIABILITY ANY PROPRIETOR/PARTNER/EXECUTIVE OFFICER/MEMBER EXCLUDED? <input type="checkbox"/> Y <input checked="" type="checkbox"/> N (Mandatory in NH) If yes, describe under DESCRIPTION OF OPERATIONS below						PER STATUTE <input type="checkbox"/> OTH-ER <input type="checkbox"/> E.L. EACH ACCIDENT \$ E.L. DISEASE - EA EMPLOYEE \$ E.L. DISEASE - POLICY LIMIT \$
A	Professional Liability			DPR5009964	03/01/2023	03/01/2024	\$5,000,000 per claim \$5,000,000 annl aggr.

DESCRIPTION OF OPERATIONS / LOCATIONS / VEHICLES (ACORD 101, Additional Remarks Schedule, may be attached if more space is required)

Professional Liability coverage is written on a claims-made basis.

CERTIFICATE HOLDER

CANCELLATION

For Proposal Purposes

SHOULD ANY OF THE ABOVE DESCRIBED POLICIES BE CANCELLED BEFORE THE EXPIRATION DATE THEREOF, NOTICE WILL BE DELIVERED IN ACCORDANCE WITH THE POLICY PROVISIONS.

AUTHORIZED REPRESENTATIVE

B. M. Carl



TAB 7 - BUSINESS ETHICS

TAB 7 - BUSINESS ETHICS

Are there any circumstances whereby the professional conduct of your firm or any of its engineers is currently being investigated by an administrative agency or qualification board?

No there are not. BSE Consultants is proud of its track record of no investigations and of its staff of high level professionals.

Is there any prior adverse judicial or administrative decision or settlement relating to a violation of ethical standards by your firm or one of its engineers?

No there are not. BSE Consultants has a long-standing reputation in the State of Florida and particularly in Brevard County as an ethical and professional company.





TAB 8 - BUSINESS AND PROFESSIONAL LICENSES

[Previous On List](#) [Next On List](#) [Return to List](#)

BSE consultants

Search

No Events No Name History

Detail by Entity Name

Florida Profit Corporation
BSE CONSULTANTS, INC.

Filing Information

Document Number	J25079
FEI/EIN Number	59-2700918
Date Filed	07/11/1986
Effective Date	07/09/1986
State	FL
Status	ACTIVE

Principal Address

312 S HARBOR CITY BLVD
MELBOURNE, FL 32901

Changed: 01/30/2020

Mailing Address

312 S HARBOR CITY BLVD
MELBOURNE, FL 32901

Changed: 01/30/2020

Registered Agent Name & Address

GLAUBITZ, SCOTT
312 S HARBOR CITY BLVD.,
MELBOURNE, FL 32901

Name Changed: 03/08/1990

Address Changed: 01/30/2020

Officer/Director Detail

Name & Address

Title DP

GLAUBITZ, SCOTT
3500 GOAT CREEK LAKE
MALABAR, FL 32950

Title DV

KAMAL, HASSAN
4080 Lower Union Road
Orlando, FL 32814

ONLINE SERVICES

[Apply for a License](#)[Verify a Licensee](#)[View Food & Lodging Inspections](#)[File a Complaint](#)[Continuing Education Course Search](#)[View Application Status](#)[Find Exam Information](#)[Unlicensed Activity Search](#)[AB&T Delinquent Invoice & Activity List Search](#)

LICENSEE DETAILS

Licensee Information

Name:	BSE CONSULTANTS, INC. (Primary Name)
Main Address:	312 S. HARBOR CITY BOULEVARD #4 MELBOURNE Florida 329011351
County:	BREVARD

License Information

License Type:	Engineering Business Registry
Rank:	Registry
License Number:	4905
Status:	Current
Licensure Date:	01/11/1988
Expires:	



Florida Department of Agriculture and Consumer Services
Division of Consumer Services
Board of Professional Surveyors and Mappers
2005 Apalachee Pkway Tallahassee, Florida 32399-6500

License No.: **LB4905**

Expiration Date February 28, 2025

Professional Surveyor and Mapper Business License

Under the provisions of Chapter 472, Florida Statutes

BSE CONSULTANTS INC
312 S HARBOR CITY BLVD STE 4
MELBOURNE, FL 32901-1351

A stylized, handwritten signature in black ink, appearing to read "W. Simpson".

WILTON SIMPSON
COMMISSIONER OF AGRICULTURE

This is to certify that the professional surveyor and mapper whose name and address are shown above is licensed as required by Chapter 472, Florida Statutes



Ron DeSantis, Governor

Melanie S. Griffin, Secretary



FBPE
FLORIDA BOARD OF
PROFESSIONAL ENGINEERS

STATE OF FLORIDA

BOARD OF PROFESSIONAL ENGINEERS

THE PROFESSIONAL ENGINEER HEREIN IS LICENSED UNDER THE
PROVISIONS OF CHAPTER 471, FLORIDA STATUTES

GLAUBITZ, SCOTT MERTON

C/O BSE CONSULTANTS INC
312 S HARBOR CITY BLVD, SUITE 4
MELBOURNE FL 329011351

LICENSE NUMBER: PE33659

EXPIRATION DATE: FEBRUARY 28, 2025

Always verify licenses online at MyFloridaLicense.com



Do not alter this document in any form.

This is your license. It is unlawful for anyone other than the licensee to use this document.



Ron DeSantis, Governor

Melanie S. Griffin, Secretary



FBPE
FLORIDA BOARD OF
PROFESSIONAL ENGINEERS

STATE OF FLORIDA
DEPARTMENT OF BUSINESS AND PROFESSIONAL REGULATION
BOARD OF PROFESSIONAL ENGINEERS

THE PROFESSIONAL ENGINEER HEREIN IS LICENSED UNDER THE
PROVISIONS OF CHAPTER 471, FLORIDA STATUTES

LUDWA, KENNETH ALAN

150 OXFORD CT
INDIALANTIC FL 32903

LICENSE NUMBER: PE77185

EXPIRATION DATE: FEBRUARY 28, 2025

Always verify licenses online at MyFloridaLicense.com



Do not alter this document in any form.

This is your license. It is unlawful for anyone other than the licensee to use this document.



Ron DeSantis, Governor

Melanie S. Griffin, Secretary



FBPE
FLORIDA BOARD OF
PROFESSIONAL ENGINEERS

STATE OF FLORIDA

BOARD OF PROFESSIONAL ENGINEERS

THE PROFESSIONAL ENGINEER HEREIN IS LICENSED UNDER THE
PROVISIONS OF CHAPTER 471, FLORIDA STATUTES

SAUNDERS, ANA LOUISE

517 BAHAMA DRIVE
INDIAN HARBOUR BEACH FL 32937

LICENSE NUMBER: PE63908

EXPIRATION DATE: FEBRUARY 28, 2025

Always verify licenses online at MyFloridaLicense.com



Do not alter this document in any form.

This is your license. It is unlawful for anyone other than the licensee to use this document.



Ron DeSantis, Governor

Melanie S. Griffin, Secretary



FBPE
FLORIDA BOARD OF
PROFESSIONAL ENGINEERS

STATE OF FLORIDA

BOARD OF PROFESSIONAL ENGINEERS

THE PROFESSIONAL ENGINEER HEREIN IS LICENSED UNDER THE
PROVISIONS OF CHAPTER 471, FLORIDA STATUTES

KAMAL, HASSAN A

B S E CONSULTANTS, INC
312 S HARBOR CITY BLVD #4
MELBOURNE FL 329011351

LICENSE NUMBER: PE41951

EXPIRATION DATE: FEBRUARY 28, 2025

Always verify licenses online at MyFloridaLicense.com



Do not alter this document in any form.

This is your license. It is unlawful for anyone other than the licensee to use this document.



Florida Department of Agriculture and Consumer Services
Division of Consumer Services
Board of Professional Surveyors and Mappers
2005 Apalachee Pkway Tallahassee, Florida 32399-6500

License No.: **LS5611**

Expiration Date February 28, 2025

Professional Surveyor and Mapper License

Under the provisions of Chapter 472, Florida Statutes

LESLIE E HOWARD
312 S HARBOR CITY BLVD.
MELBOURNE, FL 32901

A handwritten signature in black ink, appearing to read "Wilton Simpson", is written over a horizontal line.

WILTON SIMPSON
COMMISSIONER OF AGRICULTURE

This is to certify that the professional surveyor and mapper whose name and address are shown above is licensed as required by Chapter 472, Florida Statutes.

MEMORANDUM

TO: District Manager

FROM: Billing, Cochran, Lyles, Mauro & Ramsey, P.A.
District Counsel

DATE: January 19, 2024

RE: Required Ethics Training and Financial Disclosure

Ethics Training

This memorandum serves as a reminder that beginning January 1, 2024, elected and appointed commissioners of community redevelopment agencies and local officers of independent special districts are required to complete four (4) hours of ethics training annually. The training must address, at a minimum, s. 8, Art. II of the Florida Constitution (ethics for public officers and financial disclosure), the Code of Ethics for Public Officers and Employees, and the Florida Public Records Law and Open Meetings laws.

Deadlines & Recordkeeping

The deadline to complete training for this calendar year is December 31, 2024. There is no requirement to submit proof that you have completed the training. However, the Florida Commission on Ethics recommends that Supervisors maintain a record of all completed trainings, including the date and time of completion. This documentation may be useful if Supervisors are ever required to provide evidence of training completion. The training is a calendar year requirement and corresponds to the form year. Therefore, Supervisors will report their 2024 training when filling out their Form 1 for the 2025 year.

Links to Online Training

[Public Meetings and Public Records Law \(2-Hour Audio Presentation\)](#). This presentation is audio only and is offered by the Office of the Attorney General. This presentation covers public records and Florida public records law. The presentation can be accessed for free. Completing this presentation will satisfy 2 of the 4 hours of required ethics training.

[State Ethics Laws for Constitutional Officers & Elected Municipal Officers](#). This training is presented by the Florida Commission on Ethics. The training is an overview of Florida's Ethics Code (Part III, Chapter 112, and Article II, Section 8, Florida Constitution) geared toward Constitutional Officers and Elected Municipal Officers. Topics covered include gifts, voting conflict, misuse of office, prohibited business relationships, conflicting employment relationships, revolving door, and Amendment 12. This presentation can be accessed for free. Completing this training will satisfy 2 of the 4 hours of required ethics training.

[State-Mandated Continuing Education in Ethics.](#) This class is presented by the Florida League of Cities. The class covers Chapter 112 of Florida’s Ethics Code (2 Hours) and Florida Public Records and Public Meetings Law (2 Hours). To take this class, you must register for it, however there is no registration fee. Completing this class will meet your ethics training requirement.

[“4-Hour Ethics Course”.](#) The “4-Hour Ethics Course” is available online and presented by the Florida Institute of Government. There are three sessions. Session 1 covers Florida’s Public Records Laws (1 hour), session 2 covers Florida Government in the Sunshine Law (1 hour), and session 3 covers Florida’s Ethics Laws (2 hours). The registration fee is \$79. Completing this entire course will meet your ethics training requirement.

[Sunshine Law, Public Records and Ethics for Public Officers and Public Employees 2023.](#) This seminar is offered by the Florida Bar. This seminar covers sunshine law and public records; true stories of excess corruption in the ethics world; navigating Florida public records law, privacy, ethics and social media; complaints, misuse, anti-nepotism and voting; ethics during and after public service: conflicting contractual relationships & revolving door restrictions; gifts bribes, honoraria, and expenditures. The cost for this seminar is \$280. Completing this entire seminar will meet your ethics training requirement. Those Supervisors or Officers who are members of the Florida Bar may wish to purchase this option as Continuing Legal Education Credits can be earned.

We will notify you directly or through the District Manager’s office if and when other training opportunities become available.

Form 1 or Form 6

Section 8, Article II of the Florida Constitution requires constitutional officers and certain elected public officials to file a Form 6. In the last session, the legislature expanded the requirements to include *elected members of municipalities*. Independent special district officials remain exempt from the requirement to file a Form 6. Elected and appointed commissioners of community redevelopment agencies and local officers of independent special districts (including community development districts) are required to file Form 1.

For this year’s filing requirement, a completed Form 1 must be submitted prior to July 1, 2024 using the Electronic Filing System of the Florida Commission on Ethics, which can be accessed via the link at [Login - Electronic Financial Disclosure Management System \(floridaethics.gov\).](#) You will no longer be able to file your completed Form 1 through your local Supervisor of Elections office.

If you have any questions or need additional information about ethics training requirements or financial disclosure, please do not hesitate to contact our office.